



# LINC COMMUNITY ASSESSMENT

---

Prepared for The Center for Children & Youth Justice

2024

By: Michael Power, Ph.D.  
Afsaneh Rahimian, Ph.D.  
Bill Leon, Ph.D.

# LINC COMMUNITY ASSESSMENT: KEY INDICATORS

CITY PROFILES

ACADEMIC ACHIEVEMENT IN LINC  
SCHOOL DISTRICTS

COMMUNITY  
HEALTH OUTCOMES

HEALTHY YOUTH SURVEY

GANG ACTIVITY IN  
KING COUNTY

COMMUNITY PARTNERS RESPONSE  
TO GANG ACTIVITY

**Injury and Violence Ranking Among Reporting Areas  
(King County Public Health Department Report, Oct. 2022)**

<b>Health Reporting Area</b>	<b>Suicide</b>	<b>Homicide</b>	<b>Firearm-Related Death</b>	<b>Firearm in Home</b>
<b>Auburn North</b>	2	1	1	1
<b>Auburn South</b>	1	n/a	1	2
<b>Burien</b>	2	1	1	2
<b>East Federal Way</b>	3	n/a	1	1
<b>Federal Way Central</b>	2	1	1	1
<b>Federal Way Dash Point</b>	2	1	2	2
<b>Kent – East</b>	4	2	2	2
<b>Kent - Southeast</b>	4	1	2	2
<b>Kent – West</b>	1	1	1	2
<b>Renton – East</b>	3	n/a	2	3
<b>Renton – North</b>	1	n/a	2	3
<b>Renton - South</b>	3	2	1	2
<b>Southeast Seattle</b>	4	1	2	3
<b>SeaTac/Tukwila</b>	2	1	1	2

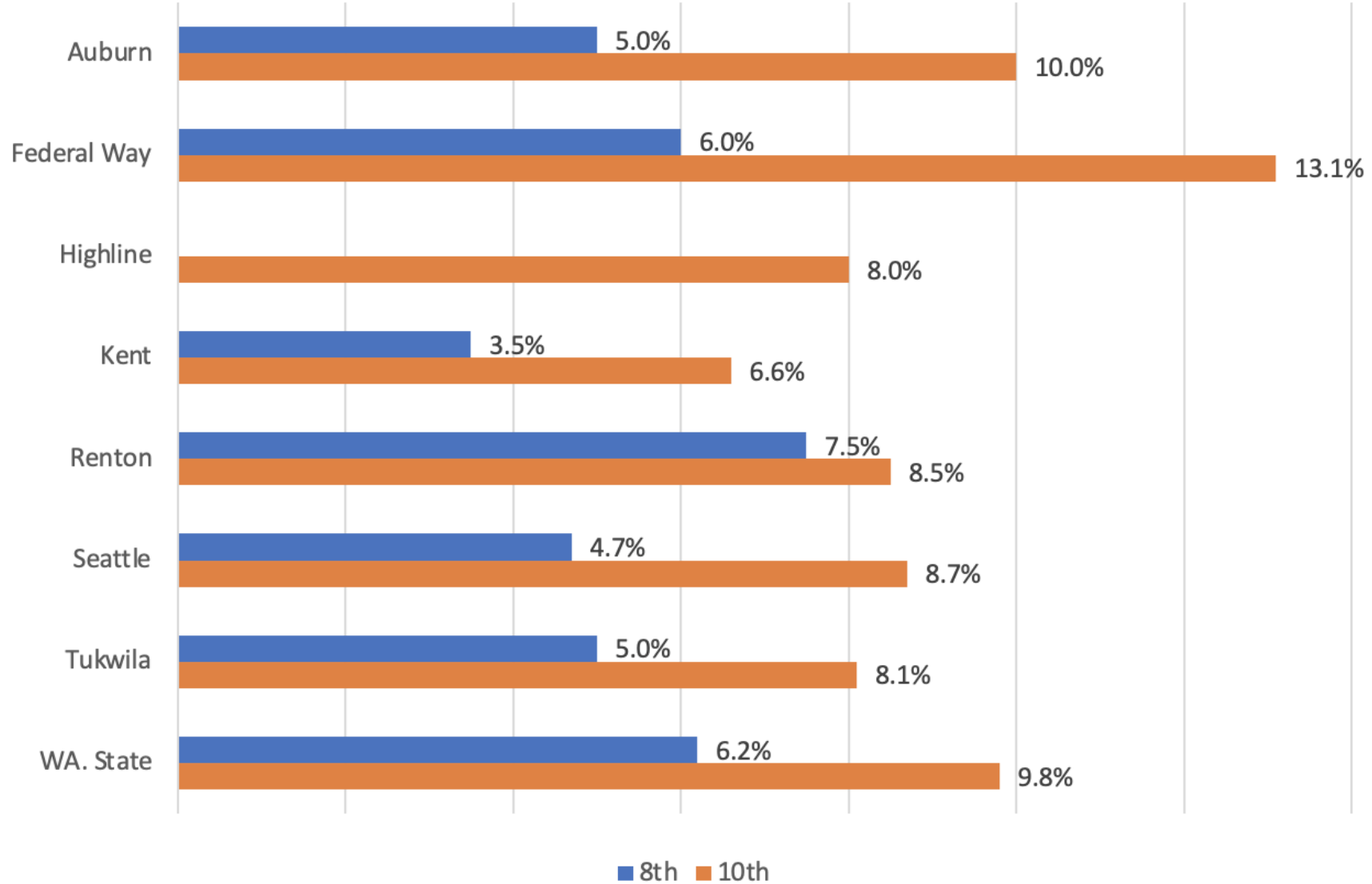
**Color Coding 1-4, Low to High**



n/a – Data not available

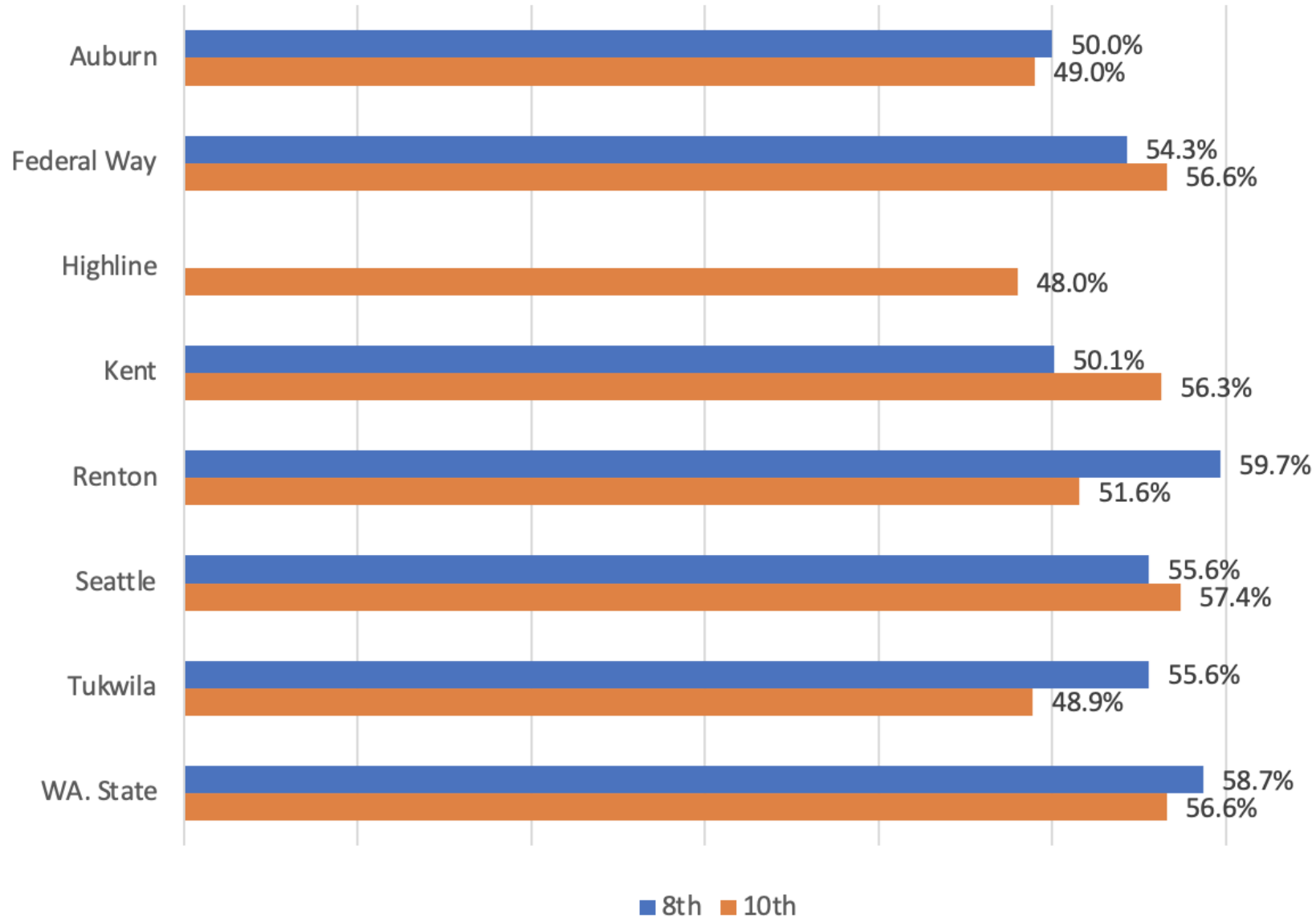
## Healthy Youth Survey Findings

### *Are there gangs in your school?*



# Healthy Youth Survey Findings

## *Low commitment to school*

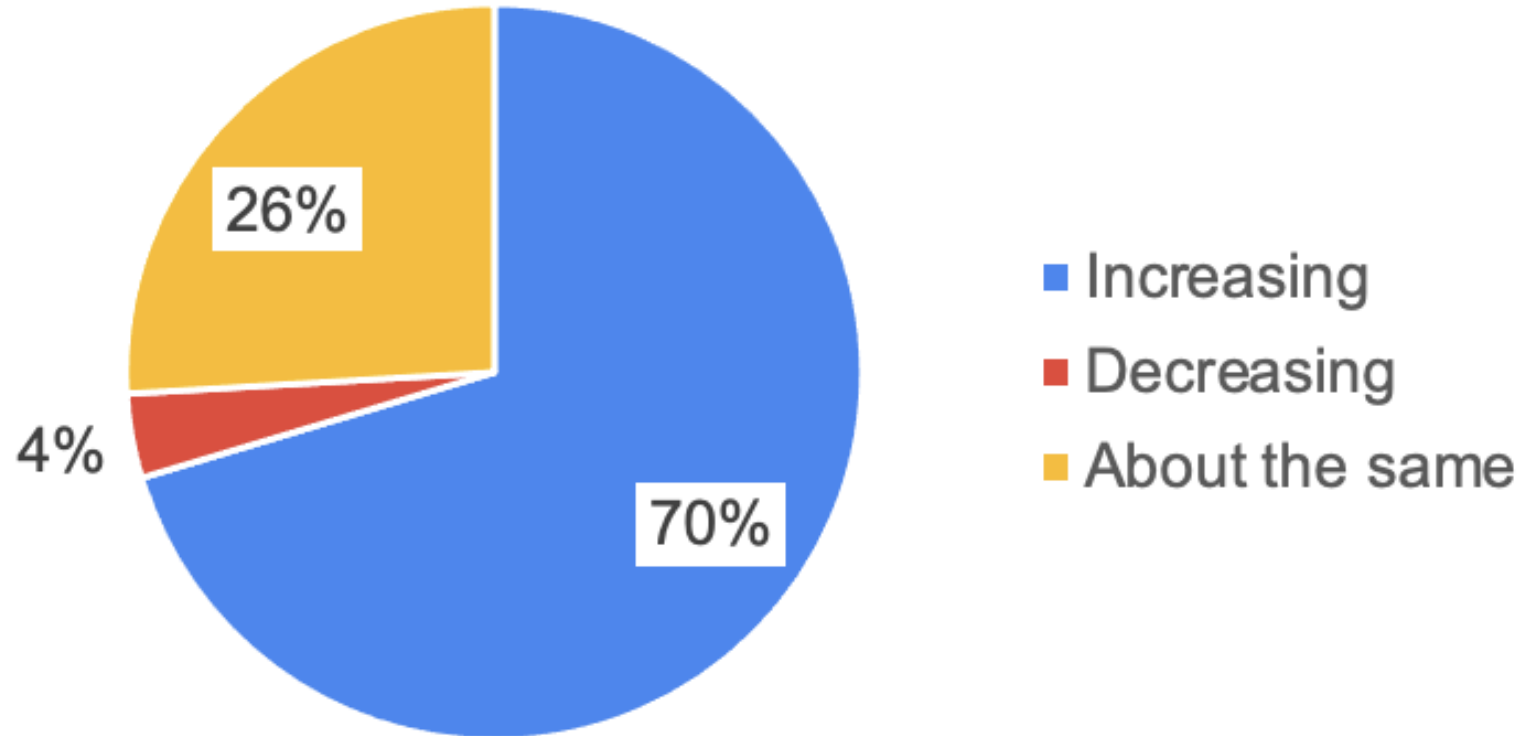


## Academic Achievement by School District for 2022

District	English language arts (% meeting standard)	Math (% meeting standard)	Science (% meeting standard)	Graduated in 4 years (%)
Auburn	43.6	30.2	35.1	86
Burien (Highline S.D.)	33.4	21.5	26.8	84
Federal Way	35.6	21.7	27.1	87
Kent	47.9	33.7	39.7	89
Renton	42.9	32.5	33.3	83
Sea Tac (Highline S.D.)	33.4	21.5	26.8	84
Seattle*	62.7	51.6	48.5	88
Tukwila	29.6	16.7	26.1	87
Washington State	50.7	37.7	42.7	82

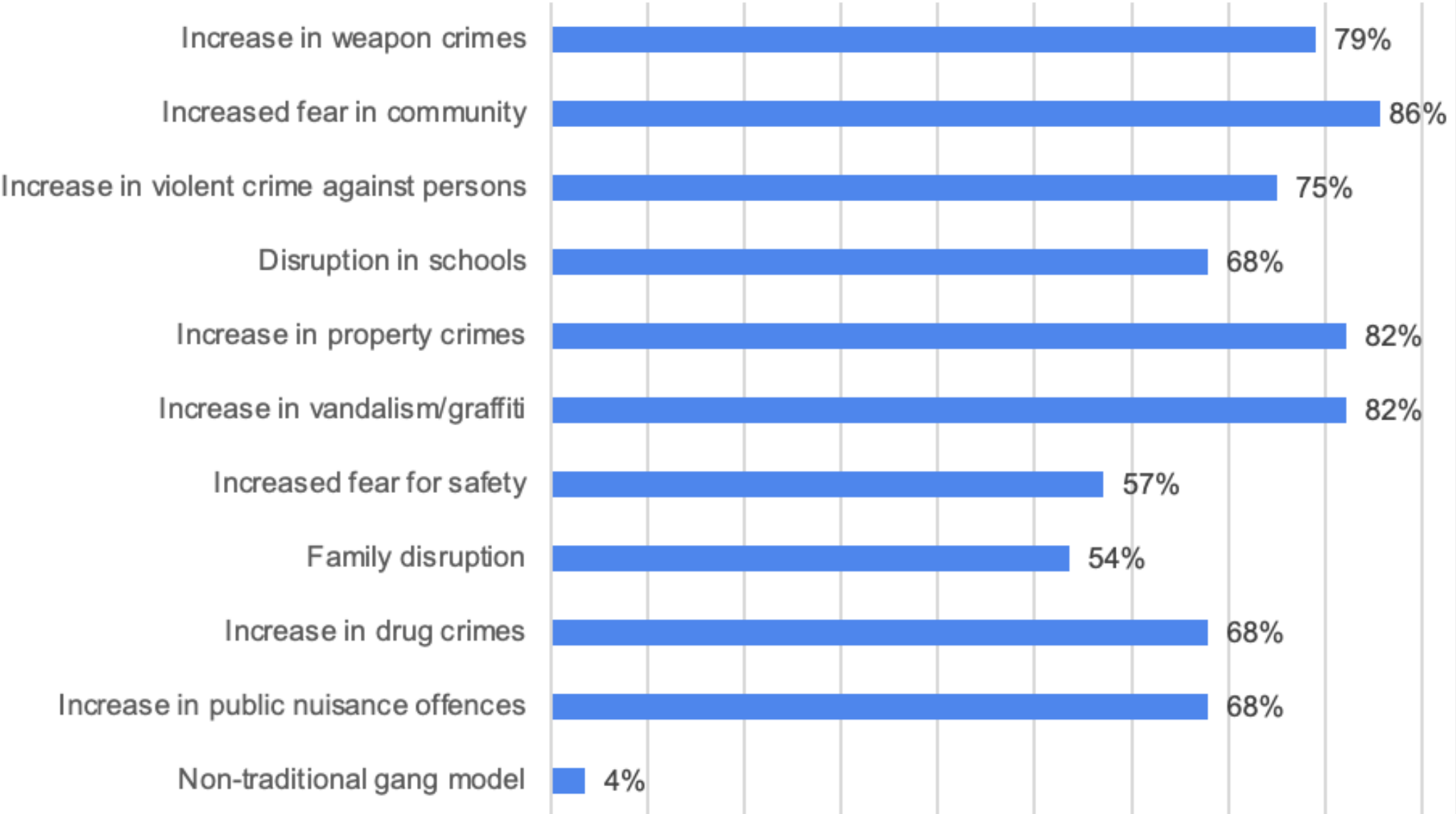
## LINC Community Partners Survey

Do you believe that over the last five years gang activity has been increasing, decreasing, or staying about the same level among the youth in your community?



# LINC Community Partners Survey

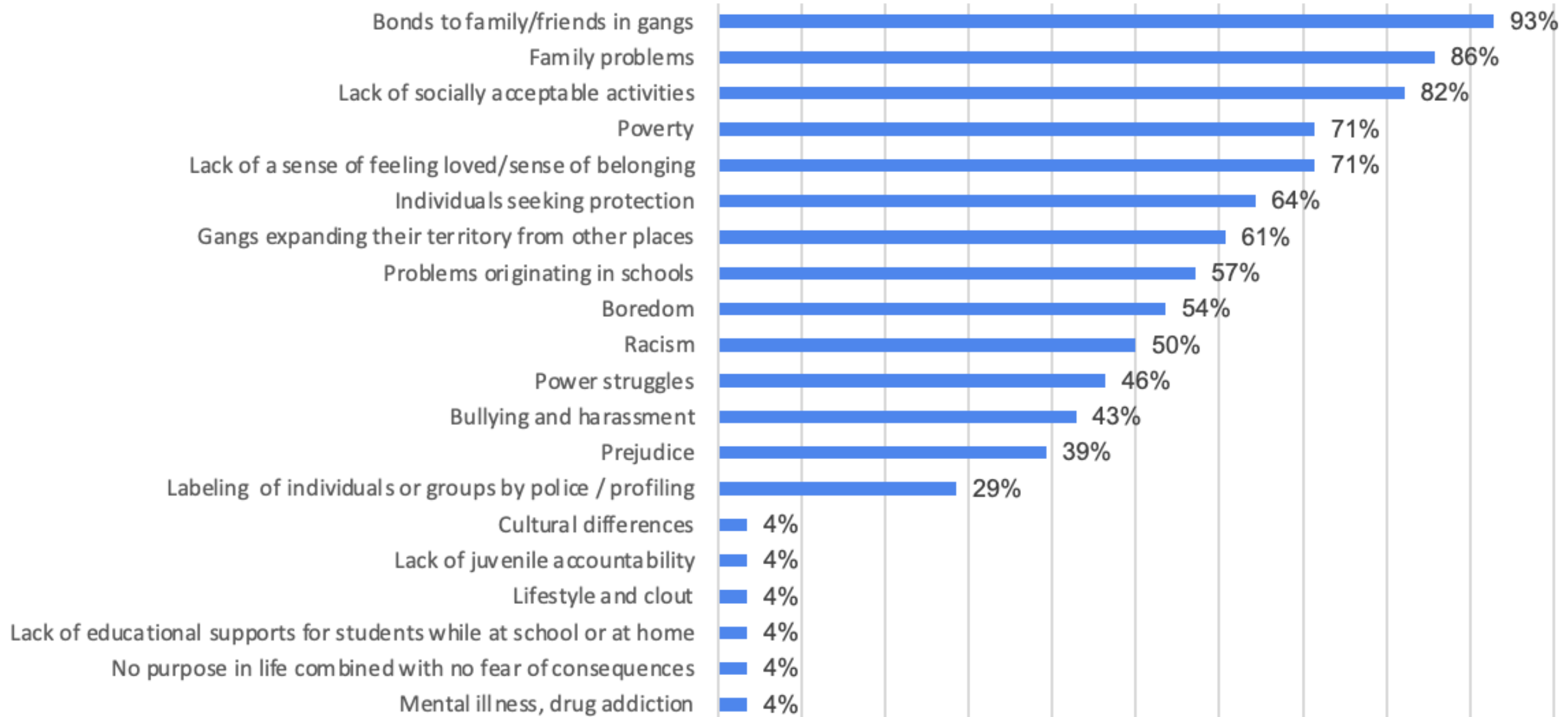
## What kinds of problems do gangs present in your community?





# LINC Community Partners Survey

## Why do you believe there is gang activity in your community ?



## LINC Community Partners Survey

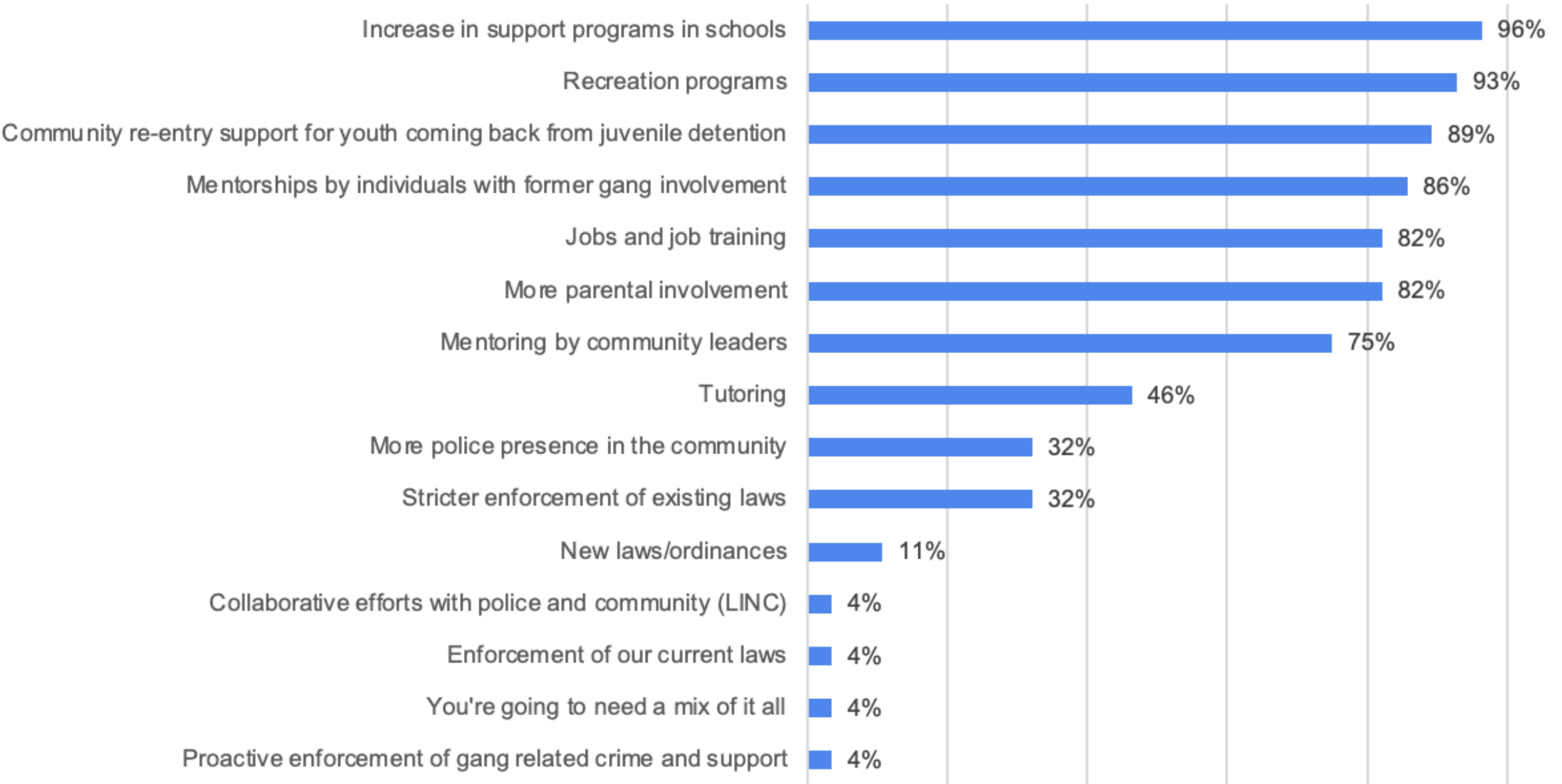
Why do you believe there is gang activity in your community?

### Most frequent responses

Bonds to family/friends in gangs	93%
Family problems	86%
Lack of socially acceptable activities	82%
Poverty	71%
Lack of a sense of feeling loved/sense of belonging	71%

# LINC Community Partners Survey

## What should be done to reduce the gang problem in the community?



## LINC Community Partners Survey

What should be done to reduce the gang problem in the community?

### Most frequent responses

Increase in support programs in schools	96%
Recreation programs	93%
Community re-entry support for youth coming back from juvenile detention	89%
Mentorships by individuals with former gang involvement	86%
Jobs and job training	82%
More parental involvement	82%
Mentoring by community leaders	75%

# LINC COMMUNITY ASSESSMENT: OVERALL SUMMARY

The cities in the LINC service area that are showing the most growth and diversity are also showing the most need for coordinated services to intervene and prevent youth involvement in anti-social activities.

The rate of poverty and unemployment is high and academic achievement is low in the LINC cities. If young people are not preparing themselves for careers and productive engagement within society, they may turn to other forms of expression that are counterproductive to the safety and quality of life in their communities.

# LINC COMMUNITY ASSESSMENT: OVERALL SUMMARY

The available data show that gangs continue to be highly active in the LINC service area and continue to have a tragic impact on communities. **The community partners who contributed their locally grounded observations regarding the gang situation highlight the need for greater resources and the collaborative effort of citizens, government, and supportive agencies - everyone with a stake in the success of all community members in south King County - to support the work of LINC, and all agencies which work to connect youth with services, to increase and coordinate support.** Only by bringing communities together to support their young people can the region realize the LINC goals to “create systemic and community-wide change to reduce gang/group involvement and improve outcomes for youth and families.”

# LINC COMMUNITY ASSESSMENT: RECOMMENDATIONS

- ❖ Create new or better approaches to helping youth to exit gang involvement.
- ❖ Work with partners to develop more *culturally relevant*, socially acceptable activities for youth prone to gang involvement, especially activities that encourage the development of pro-social bonds among youth and positive relationships with responsible adults.
- ❖ Support development of more community-centered healing resources with engagement by law enforcement.
- ❖ Improve connections with law enforcement.
- ❖ Establish multiple consistent, clear, and easily accessible ways for youth to tell service providers what they need, what they want, and what support will make a difference to them. In addition, develop ways to share youth insights across service providers, communities, and funders.

# LINC COMMUNITY ASSESSMENT: RECOMMENDATIONS

- ❖ Work with community partners to facilitate the development of more early intervention strategies for family conflicts and for youth with anger management issues.
- ❖ Find or create programs that can help families find the stability they need to be better able to support their children and protect them from the influences of gang culture.
- ❖ Create and implement self-evaluation measures for each MDIT so that they can track and enhance their progress working with youth.
- ❖ Create a data dashboard on progress toward LINC goals.
- ❖ Update the LINC Strategic Plan based on the data in this Community Assessment.



# GEO EDUCATION & RESEARCH



## CONTACT INFORMATION

<https://geoeducation.org>

billleon@geoeducation.org

206-914-6663

michael-power@comcast.net

rahimianafsaneh@yahoo.com