

A close-up photograph of an adult's hands gently holding a baby's foot. The adult's hand has a silver bracelet and a red and black beaded bracelet. The baby's foot has blue nail polish. The background is blurred, showing a person in a white shirt and a baby in a blue patterned outfit.

Safe Babies Court Team Design Team Meeting I

Center for Children & Youth Justice (CCYJ)
and
ZERO TO THREE

Welcome to the Safe Babies Design Team!

- We have an amazing opportunity to create positive change for families in Washington State
- Our goal is to develop a comprehensive plan specific to the needs of infants, babies, toddlers, and parents across our state

“Very real crises mark our time. And as much as we might like it otherwise, it appears that doing what we have always done, only harder, will not solve them.”

– Charles Johnston

Agenda Overview

Introduction	9:30 - 9:45 a.m.
Overview of ZERO TO THREE Approach + Q&A	9:45 - 10:45 a.m.
Discussing the Opportunity for Washington State	10:45 - 11:00 a.m.
Designing Washington's Plan	11:00 a.m. - 12:20 p.m. (break from 11:20 - 11:30 a.m.)
Next Steps and Closing	12:20 - 12:30 p.m.

Our Staff - Center for Children & Youth Justice (CCYJ)



Rachel Sottile
President & CEO



Gina Cumbo
Vice President,
Innovation & Impact



Morgan Silverman
Associate Director of Programs



Michelle Williams
Program Coordinator



Heather Cantemessa
Parent Ally, Consultant



Shrounda Selivanoff
Parent Ally, Consultant



Kelly Warner-King
Content Expert, Consultant

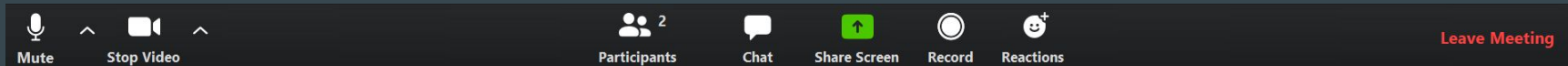


John Deter
IT Generalist, Producer

Using Zoom Functions

- Please be muted during the meeting
- Chat: Type any discussion prompts, questions, and comments into the chat box
- Raise Hand: Raise your hand to speak to the group, once your name is called, you can unmute yourself and share your thoughts
- There will be opportunities to answer questions from the chat box throughout the meeting
- Questions, comments, and answers in the chat box will be recorded and distributed to members after the meeting

Thank you for your patience as we manage virtual discussions!



Speed Networking Activity

What is your role, and why do you think it is important to support families with children ages zero to three?

example: “Family Treatment Court Coordinator - because so much brain development occurs during that age”

Type your answer into the chat box

- Please read and review the responses to yourself
- Comments will be copied and included in the meeting



ZERO to THREE
Early connections last a lifetime



The National Infant Toddler Court Program:
Transforming Families and Communities



ZERO TO THREE
Early connections last a lifetime



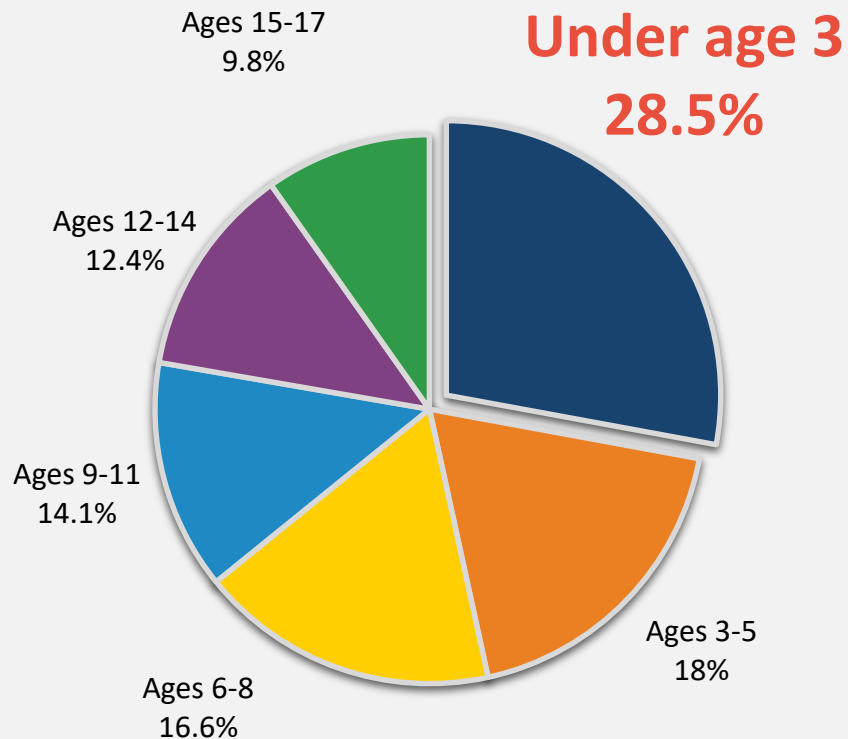
**Our mission is to ensure that all babies and
toddlers have a strong start in life.**



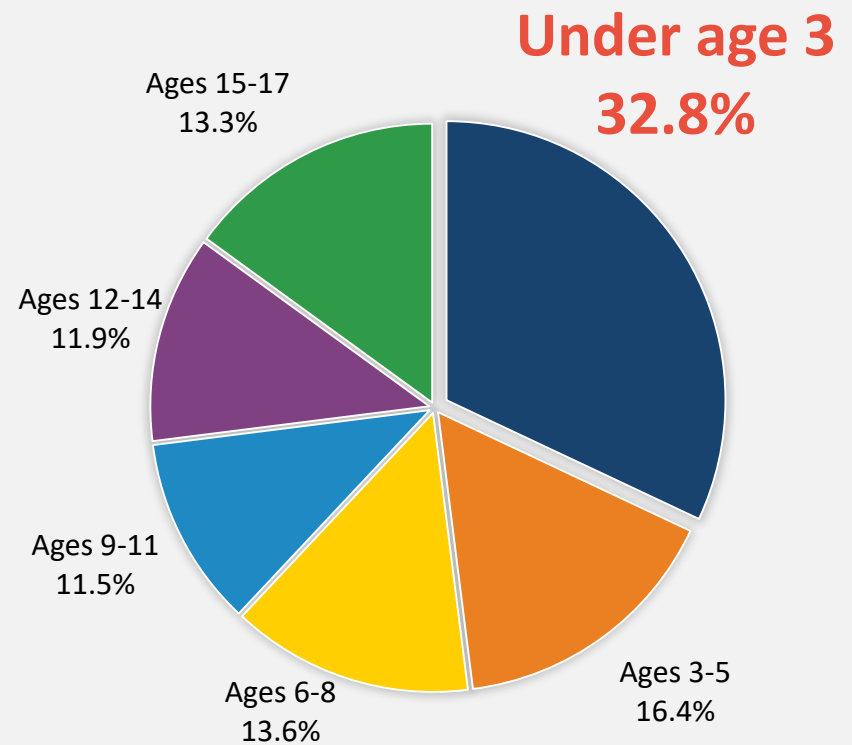
ZERO to THREE

A National Look: Risk Disproportionality by Age

MALTREATMENT RATES



FOSTER CARE ENTRY RATES



What We Know about Infants and Toddlers in Washington State



Washington State Foster Care Entry Rates by Age

0 to 12 months	1 year	2 years	3 years
24.5%	7%	6.8%	6.5%

At **24.5%**, Washington State has the 3rd highest rate of foster care entry for children under 12 months of age in the United States.

Why Develop a State Plan for Supporting Babies & Why Now?



There are three factual threads that inspired the Safe Babies Court Team approach and ring true for State systems everywhere regarding young children in care:

1. The number of infants and toddlers entering foster care far exceeds any other cohort from birth – 18 years of age.
2. Science tells us that the brain's developing architecture is greatly impacted by trauma and maltreatment in this population.
3. There is benefit to society as a whole of intervening with the youngest children.

FACTS 



ZERO to THREE

Where State Support Meets Implementation To Improve Outcomes





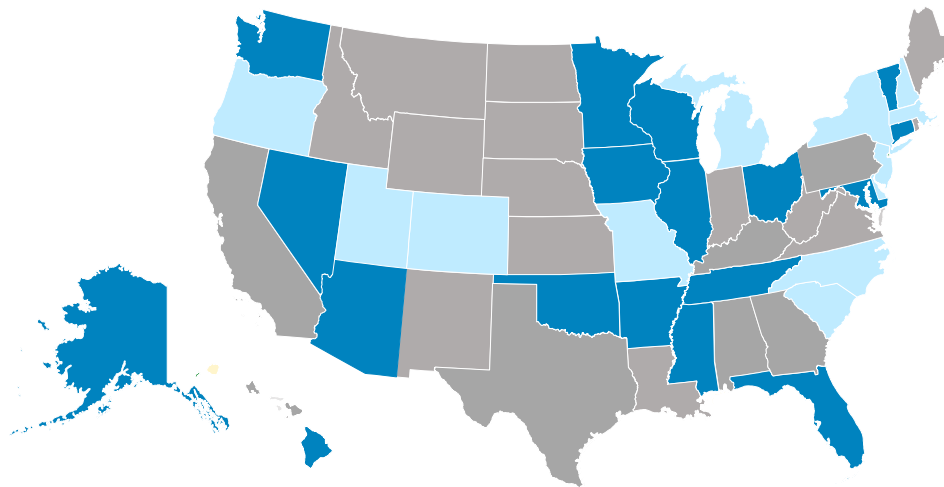
ZERO TO THREE
Early connections last a lifetime

Infant-Toddler Court Program National Network

100 SITES TOTAL and 29 STATES

**57 Active
Sites**

2 Statewide:
**Tennessee &
Florida**



**43 Outreach
Sites**

**with Statewide
Exploration in 6
States**



ZERO TO THREE's Safe Babies Court Team™ (SBCT) approach

applies the science of early childhood development in meeting the urgent needs of infants and toddlers and strengthening their families and communities.

Meet Victoria



ZERO to THREE
Early connections last a lifetime





The Infant Toddler Court Program: Our Mission

Support

Support parents' strengths and needs in a respectful, holistic and individualized way

Address

Address service gaps and disparities using Continuous Quality Improvement

Remove

Remove barriers to racial equity and social justice

Prioritize

Prioritize developmentally appropriate evidence-based interventions with very young children

Infuse

Infuse a trauma-informed approach that supports children, families and professionals across a system of care



ZERO to THREE

The Safe Babies Court Team™ Core Components

Interdisciplinary
Collaborative, &
Proactive Teamwork

- Judicial and Child Welfare Leadership
- Local Community Coordinator
- Active Community Team

Enhanced Oversight &
Collaborative
Problem-Solving

- Pre-/Post Removal Conferences and Family Team Meetings

Expedited,
Appropriate &
Effective Services

- Continuum of Services for Children and Families

Trauma – Responsive
Support

- Meeting Parents Where They Are
- Nurturing Parents' Relationships and Building Social Supports in the Community
- Frequent, Quality Family Time
- Concurrent Planning

Continuous Quality
Improvement

- System Commitment to Continuous Learning and Improvement

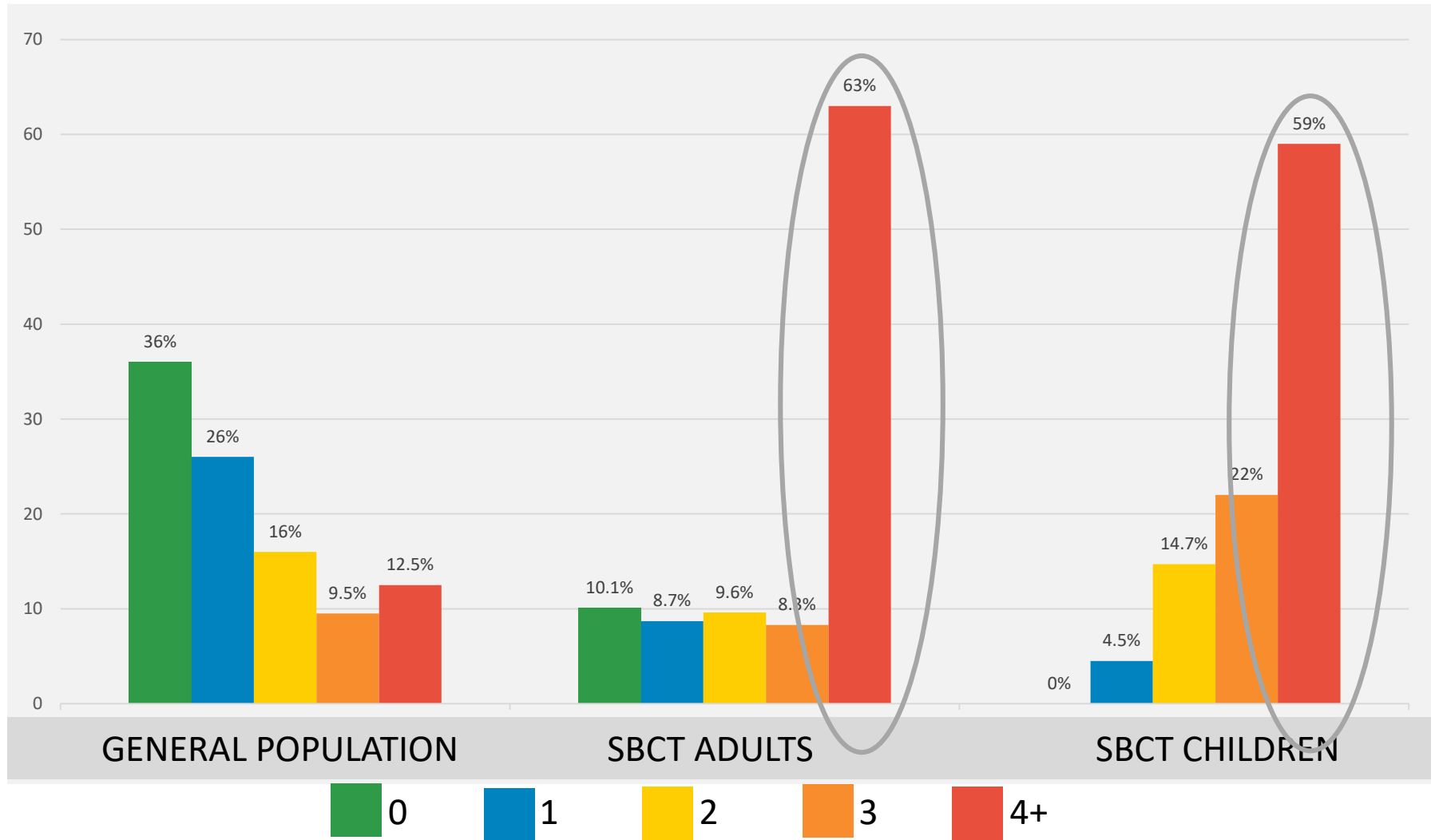
SBCT Objectives

GOAL: Strengthen parental capacity for reunification and achieve lasting permanency for infants and toddlers under the Court's jurisdiction.

- **Use of evidence-based practices**
- **Minimize placement changes**
- **Access to mental health services**
- **Access to early intervention services**
- **Comprehensive and consistent healthcare**
- **Proactive concurrent planning from day one**
- **Identified post-permanency services and supports**



Adverse Childhood Experiences





ZERO to THREE

ITCP's Approach to Trauma:

Addressing Traumatic Experiences for Young Children Entering Foster Care

- ✓ Difficult experiences precipitating placement
- ✓ Negative experiences as a part of the removal process
- ✓ Separation from parents, that is sudden and traumatic
- ✓ Placement with a series of caregivers
- ✓ Very little contact with parents after placement
- ✓ Holding in mind already existing trauma and potential triggers as we engage





ZERO to THREE

Cross System Collaboration



Family Level

- Parents
- Caregivers
- Children
- Assigned Attorneys
- Child Welfare
- Immediate Service Providers – Working Directly Each Specific Family



Community Level

- Courts
- Child Welfare Agency
- Community Agencies
- Public Health Department
- Early Interventionist
- Child Advocates
- Foundations
- Law Enforcement
- Other community institutions



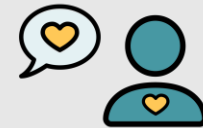
Operationalizing the Work: Teaming to Support Family Resiliency



Enhancing Quality Family Contact
Normalizing parenting



Creating Safe Spaces for Effective
Problem-Solving Meetings



Understanding Trauma
Informed & responsive
engagement



Identifying Concrete Supports in
Times of Crisis



Avoiding the Unintentional Setup:
Being Conscious of the race to the
finish line



Expediting Access to Treatment
Services for Parents and Children



Prioritizing Earlier Access to Early
Childhood Intervention &
Developmental Services



Promoting Quality Parent
Education Programs



Exploring Policy & Practice to
Influence Positive Outcomes



ZERO to THREE

Early connections last a lifetime



Reflection: A System
Commitment to
Continuous Learning
and Improvement



ZERO to THREE

Exploration of Impact Areas: Tracked by the National SBCT Database

Placements

- Type of Living Arrangement
- Number of Placements

Case Length

- Length of Time in Foster Care
- Length of Time in Program

Family Engagement

- Family Team Meetings
- Court Hearings
- Stakeholder Meetings

Parent-Child Interaction

- Visitation: Frequency
- Quality of Family Interaction

Permanency

- Permanency: Timeliness
- Permanency: Reunification with Birth Parent(s)



Meeting Frequency/Quality

- Court Hearings
- Parent Participation
- Stakeholder Meetings

Adult Services

- Depression Screening
- Treatment Services: Access
- Treatment Services: Participation
- Perinatal/Postpartum Care
- Well-Women Visits

Child Services

- Child-Parent Psychotherapy
- Developmental Screening
- Early Intervention Services
- Emergency Room Visits
- Safe Sleep
- Well-Child Visits: Frequency

Family Well-Being

- Health Equity
- Health Insurance Coverage

Impact Areas Tracked by the SBCT Database: Pierce County Key Statistics

Meeting Frequency

- Court Hearings were held on average every 53 days
- Family team meetings were held, on average, every 62 days

Parent Engagement

- Parent(s) were present at 90% of Court Hearings
- Parent(s) were present at 88% of Family Team Meetings

Family Child Contact

- Family-child contact occurs on average 3 times a week
- 92% of family-child contact is monitored, 4% is unsupervised

Child Safety

- 100% of infants under 1 had a safe sleep screen
- 100% of safe sleep screens showed caregivers following all three AAP safe sleep recommendations





ZERO to THREE

National SBCT Impact: **Safety & Placement**

	SBCT	National Standard
MALTREATMENT RECURRENCE IN 12-MONTH PERIOD	0.7%	9.1%
TWO OR FEWER PLACEMENTS FOR CHILDREN IN CARE 12-23 MONTHS	79.4%	66.1%





ZERO to THREE

Safety & Placement: Pierce County Placement Data

Number of Placements	Best for Babies – Open Cases	Best for Babies – Closed Cases	Best for Babies – All Cases
1 placement	57%	100%	70%
2 placements	36%	0%	25%
3 placements	0%	0%	0%
4 placements	7%	0%	5%
5+ placements	0%	0%	0%





ZERO to THREE

National SBCT & Pierce County Exit Data

Nationally - Among 231 children with closed cases between April 2015 -May 2018,

83.7%: Reached permanency within 12 months.

48.6%: Reunified with parents

32.2%: Adopted

14 %: Placed a fit and willing relative

No significant differences for permanency within 12 months by child's race/ethnicity.

Pierce County Exit Type	# of Children – Pierce County Data*	% of Children – Pierce County Data
Reunification	15	63%
Guardianship	2	8%
Adoption	7	29%

* Data based on 17 families (24 children) since 2016

Since the beginning of the Infant Toddler Court Team Project (ITCP) in October 2018, 100% of closed cases have been reunified with parents.





ZERO to THREE

National SBCT Impact: **Services and Supports**

- Over 95% of children identified as needing Early Intervention services received screening and treatment
- Over 90% of children needing CPP received services, and of these, over 70% were seen within 30 days
- 73.8% of parents needing SUD treatment services were seen within a week
- 80.1% of parents needing mental health services were seen within 30 days





ZERO to THREE

Services & Supports: Pierce County Child Service Usage

Developmental Screenings

- 100% of children* received a developmental screening/assessment

Services Received By Children* Include:

- Child Care (62% of children)
- Early Intervention Speech Therapy (38%)
- Early Intervention Occupational Therapy (24%)
- Early Intervention Physical therapy (24%)
- Infant Mental Health – Other Services (19%)
- Health Care Services outside of Well-Child Visits (14%)
- Child Parent Psychotherapy (10%)
- Early Head Start/Head Start (5%)

*N = 21 children





Services & Supports: Pierce County Adult Service Usage

- **Services Received By Adults* Include:**
 - Parent Education (50%)
 - Mental Health Counseling (45%)
 - Psychological Evaluation (36%)
 - Substance Use Outpatient Treatment (without children) (36%)
 - Substance Use Screening (32%)
 - Substance Use Inpatient Treatment (without children) (23%)
 - Medication Assisted Treatment (23%)
 - Other Services (23%)
 - Well-Woman/Preventative Visit (14%)
 - Intensive Case Management (9%)
 - Health Care Visit (5%)
 - Child-Parent Psychotherapy (5%)
 - Substance Use Inpatient Treatment (with children) (5%)

*N = 22 adults





ZERO to THREE

Pierce County Demographic Data

Race/Ethnicity	Pierce County*	Best for Babies – Adults	Best for Babies – Children
White	66.38%	81.80%	66.67%
Black/African American	6.87%	4.55%	4.76%
American Indian/Alaskan Native	1.11%	0%	0%
Asian	6.68%	0%	0%
Native Hawaiian and Other Pacific Islander	1.55%	4.55%	9.52%
Two or More Races	6.58%	4.55%	14.29%
Hispanic or Latino, any race	10.83%	4.55%	4.76%

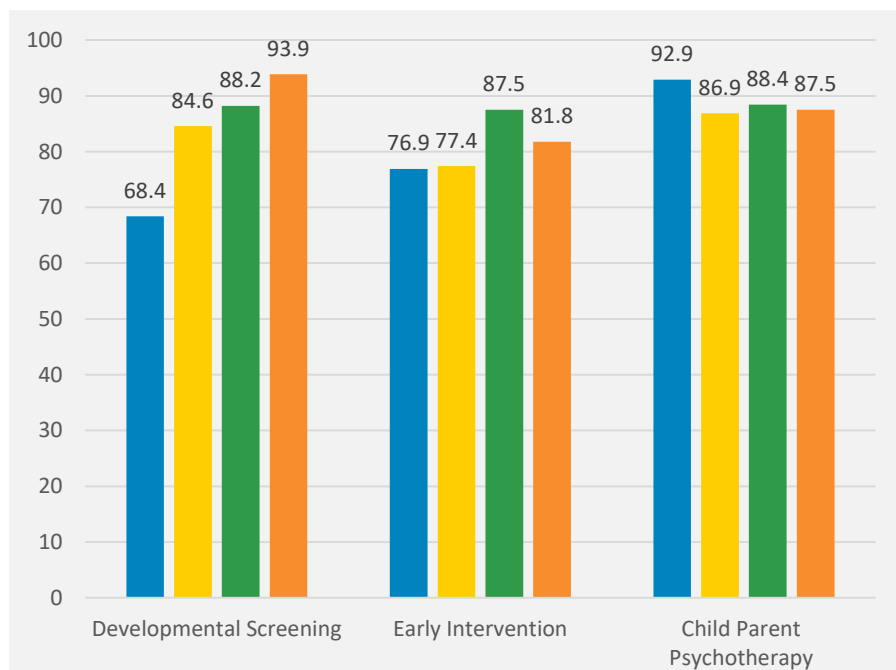
* 2018 data from Washington's Employment Security Department – All Ages



ZERO to THREE

SBCT Impact: Racial Equity

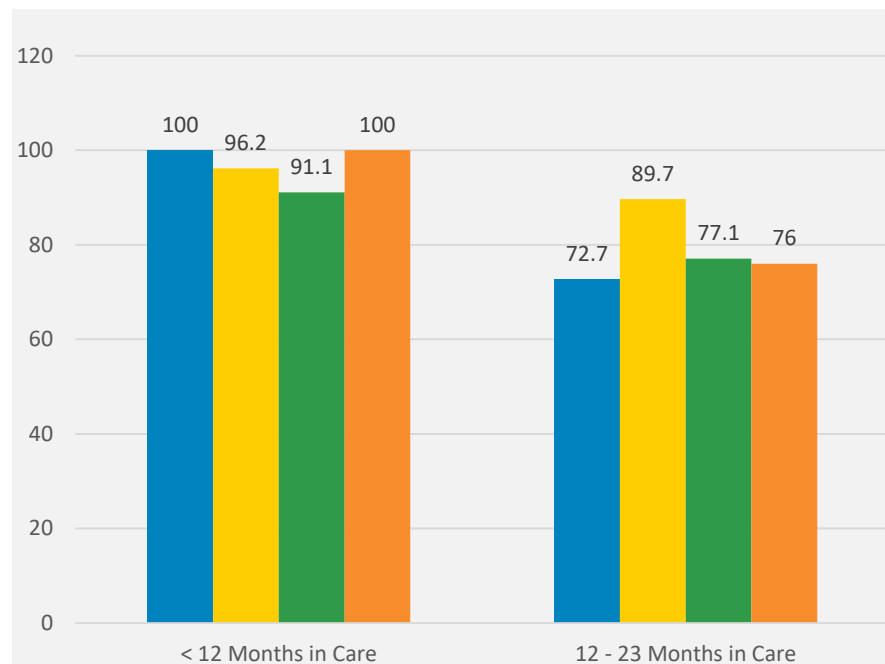
SBCT children experienced **equitable access to services and reduction in number of placements regardless of race/ethnicity.**



**Percentage of Children by Race/Ethnicity
Receiving Services within 60 Days**

Hispanic

Black



**Percentage of Children by Race/Ethnicity
Having Two (2) or Fewer Placements**

White

Other



ZERO to THREE

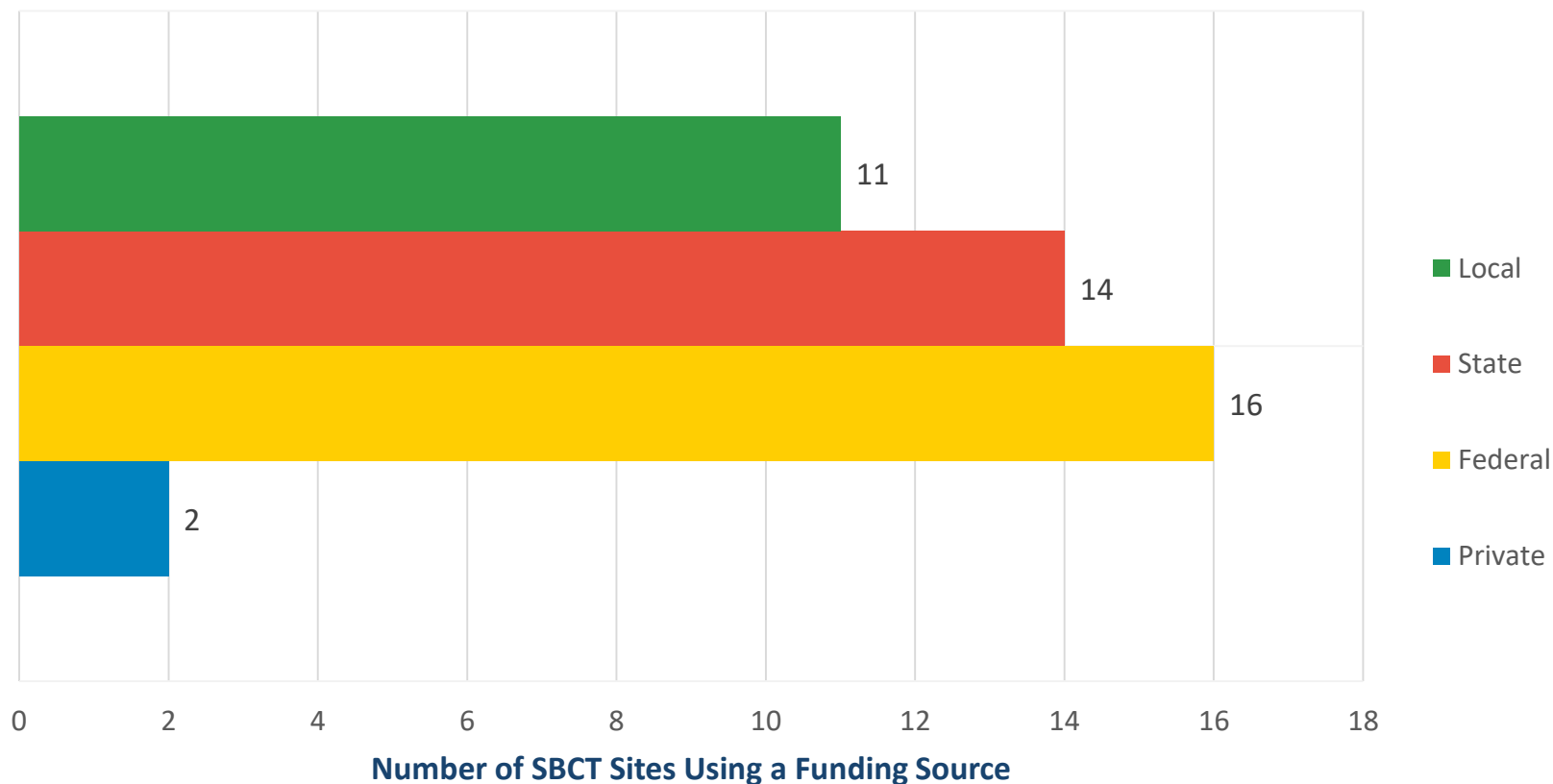
Early connections last a lifetime



Fiscal Implications for Implementation

Funding for SBCT Sites

SBCT Sites Rely on a Mix of Funding



*Sites may report more than one funding source.

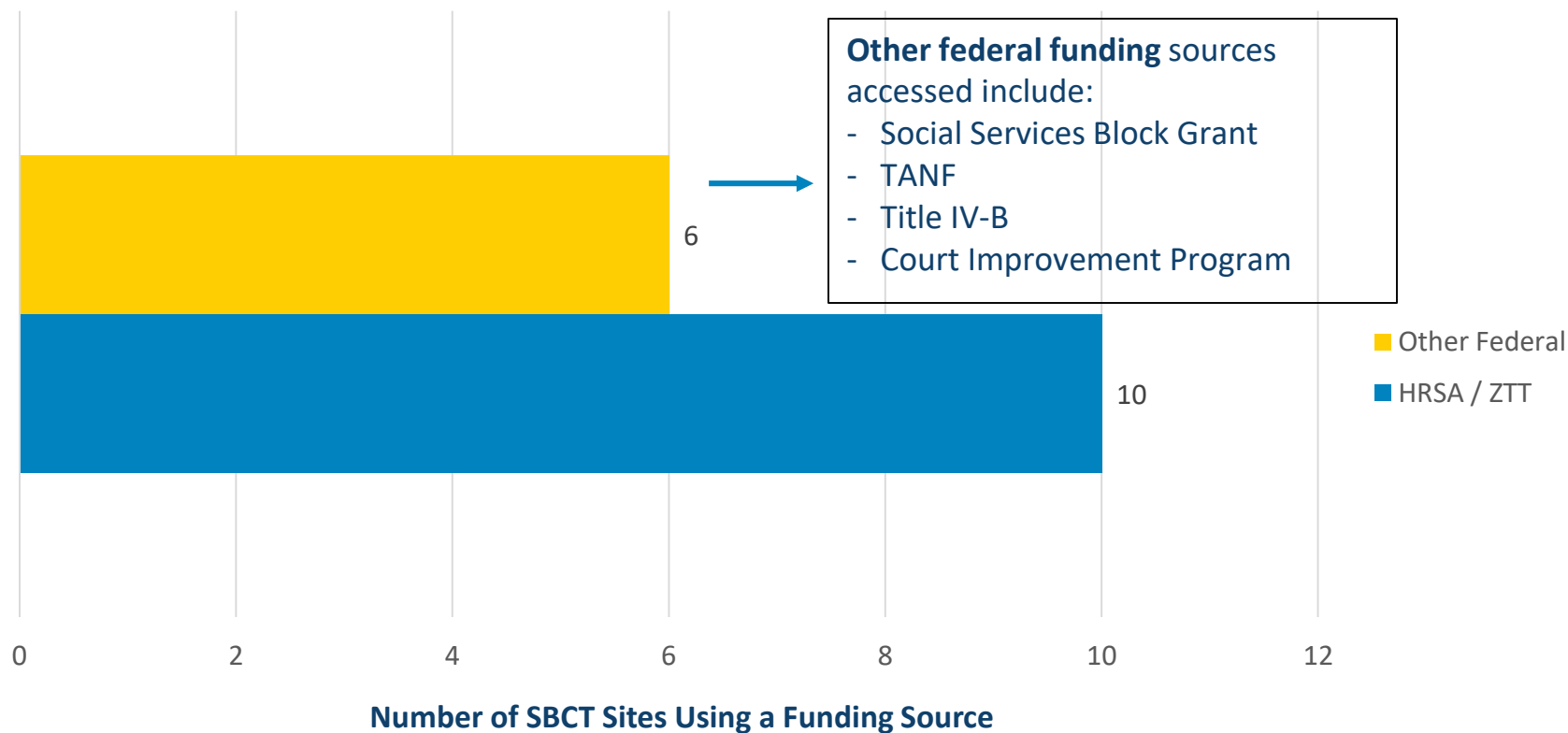
**Findings are based on a 2020 survey of SBCT sites. 23 SBCT sites responded, 10 of which are HRSA funded evaluation sites.

Federal Funding



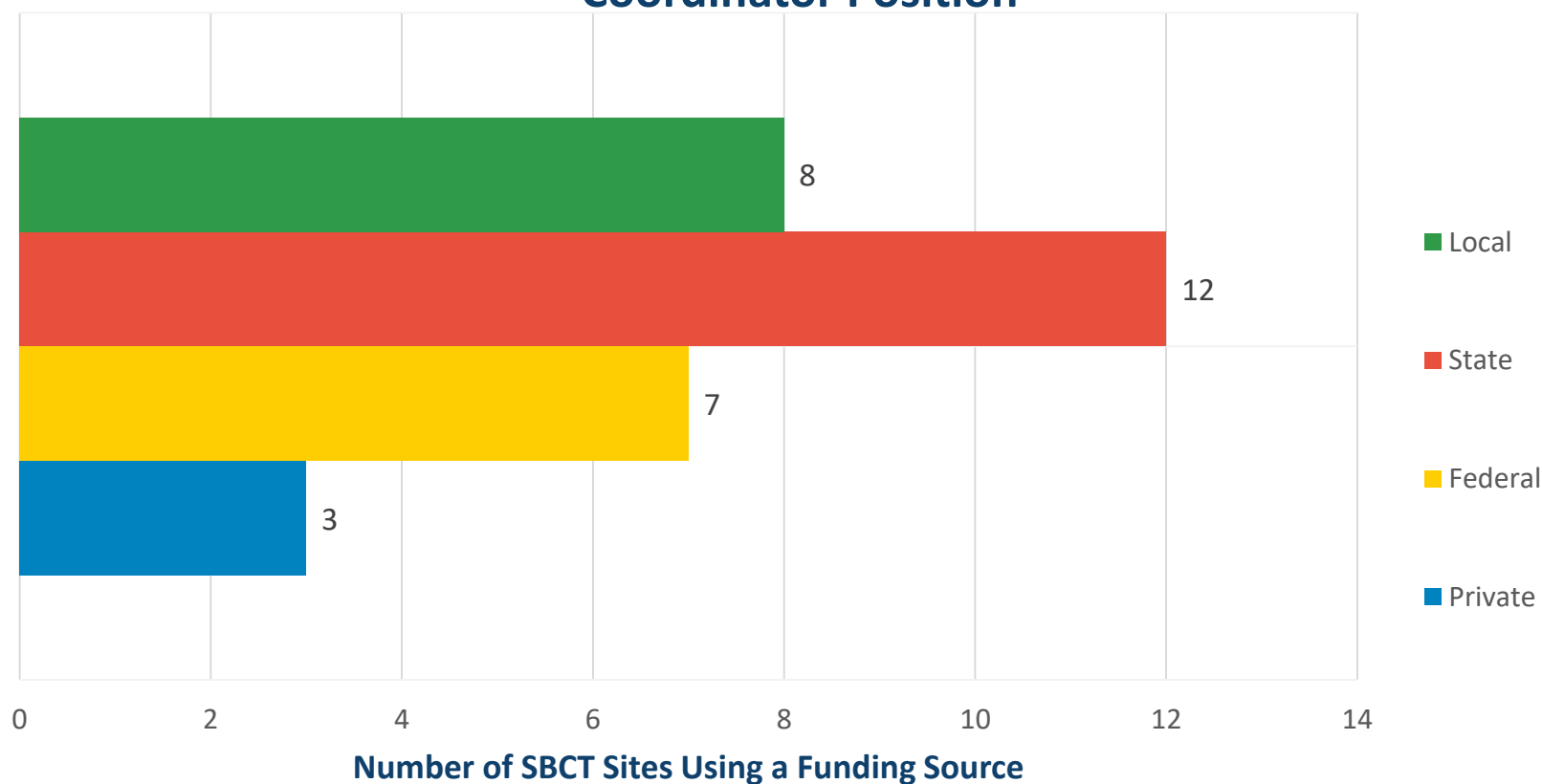
ZERO to THREE

Opportunities Exist for SBCT Sites to Increase Use of Federal Funding Streams



Funding for Community Coordinator

Sites Use a Mix of Funding to Support the Community Coordinator Position



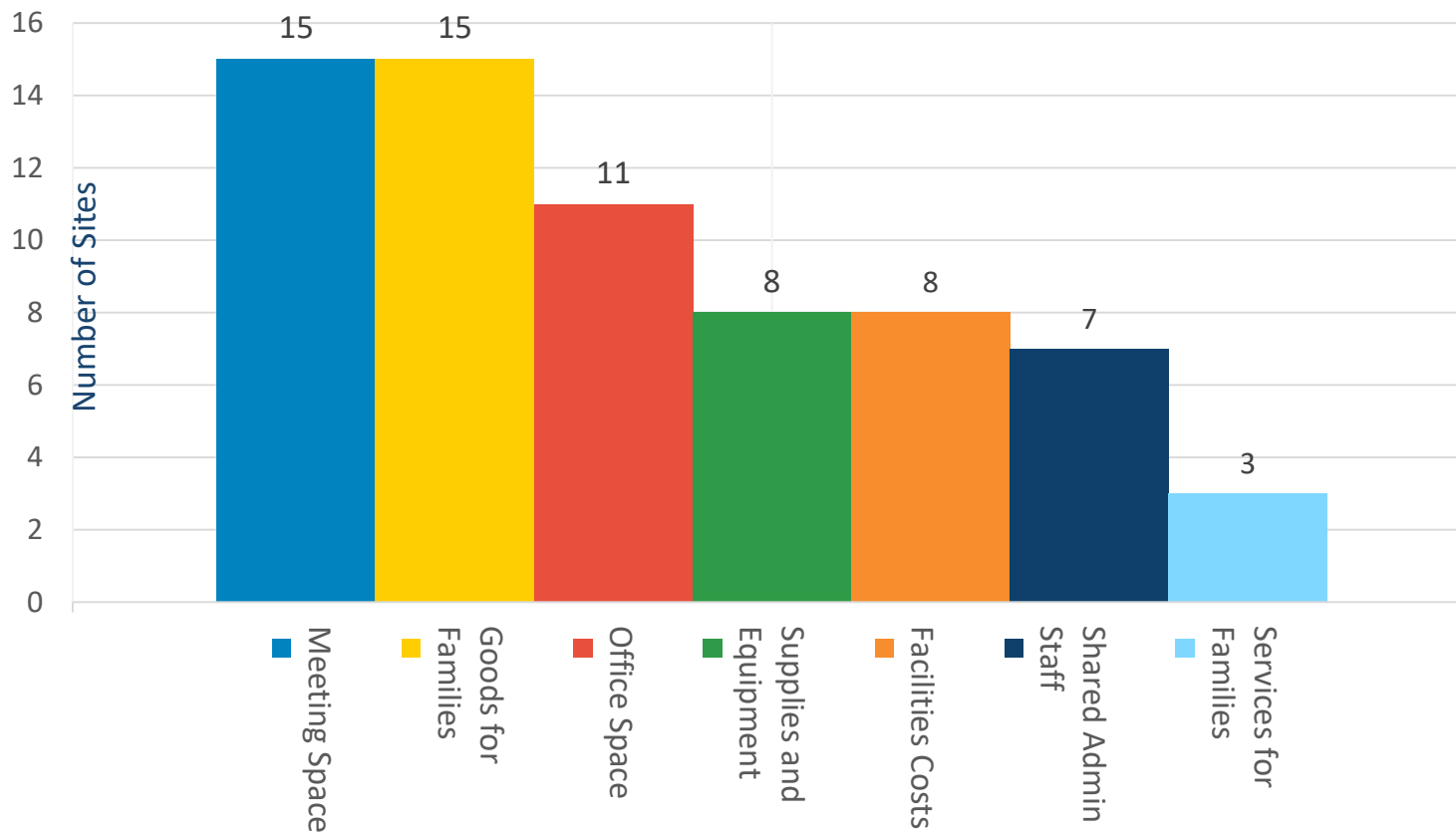
* Sites may report more than one funding source.

In-Kind and Donated Services and Supports



ZERO to THREE

SBCT Sites Leverage Many In-Kind and Donated Services and Supports



* Sites may report more than one in-kind or donated resource.

Successful Funding Strategies

Sites identified several strategies they have found successful in sustaining their work

- Using **performance data** to make the case to local and state leaders
- Working with **community partners** to leverage additional supports and services
- Identifying **key champions** to support SBCT
- **Blending funding** from different sources

SBCT sites have begun to see policy and/or practice change in the jurisdictions where they work to the larger child welfare system, including:

- Greater frequency and quality of **family time**
- Increased use of **family team meetings**
- Increase in professionals **trained** on evidence-based interventions
- Increased **frequency of hearings**
- Increased **access to other services** for parents/children, including mental health and substance use



ZERO to THREE

Early connections last a lifetime

Here's How We Can **Help**



The ITCP National Resource Center Supports for Implementation



Our National Team Includes:

- The ITCP Program Director
- Senior Technical Assistance Specialist and TA Specialist Team
- A Senior Outreach Specialist
- Quality Improvement Manager
- Director of Policy and Finance
- Senior Research Analyst/Program Development Specialist
- **National Partnerships with:**
 - The American Bar Association
 - The National Counsel of Juvenile and Family Court Judges
 - The Center for Social Policy
 - RTI International

ITCP National Resource Center

Supports for Implementation



- **Strategic Planning Assessments for Sites**
 - Inclusion of the core team in a dialogued-assessment to explore natural alignment with identified areas of support
 - Site level recommendations and national supports identified
- **Participation in the ITCP National Resource Center Learning Collaboratives**
 - Distance Learning Sessions with other implementation sites across the country
 - Support calls for sites
 - In-person training and strategic planning
- **Community of Practice Calls for Judges & Attorneys**
- **Structured Learning Community for Community Coordinators**
- **Structured Learning Community for State Teams**
- **Access to national content experts for community-based trainings**
- **Access to the National SBCT Database** for monitoring and evaluation of site level data with state and national comparisons to promote Continuous Quality Improvement
- **National Webinars** covering a wide range of subject-matter expertise

** Recommended 3-year plan to support standing up sites before shifting to a more independent structure for sustainability*

Systems Transformation = Healthier Families



ZERO to THREE





ZERO to THREE
Early connections last a lifetime

Questions and Answers

Opportunity for Washington State

- Potential for three implementation sites in Washington State
- Funding to launch new sites
- Training and Technical Assistance - ZERO TO THREE
 - Funding opportunities - HRSA
 - Subject-matter expertise
 - Data and evaluation
 - Site readiness assessments
- WA Coordination and Implementation - CCYJ
 - Plan development
 - Meeting facilitation and coordination
 - Administrative support

Opportunity for Washington State - Deliverable

At the end of this process, we will have created a **comprehensive** and **concrete** **implementation plan** that describes high impact opportunities, areas for expansion and sustainability

Implementation Plan Deadline: July 31, 2020

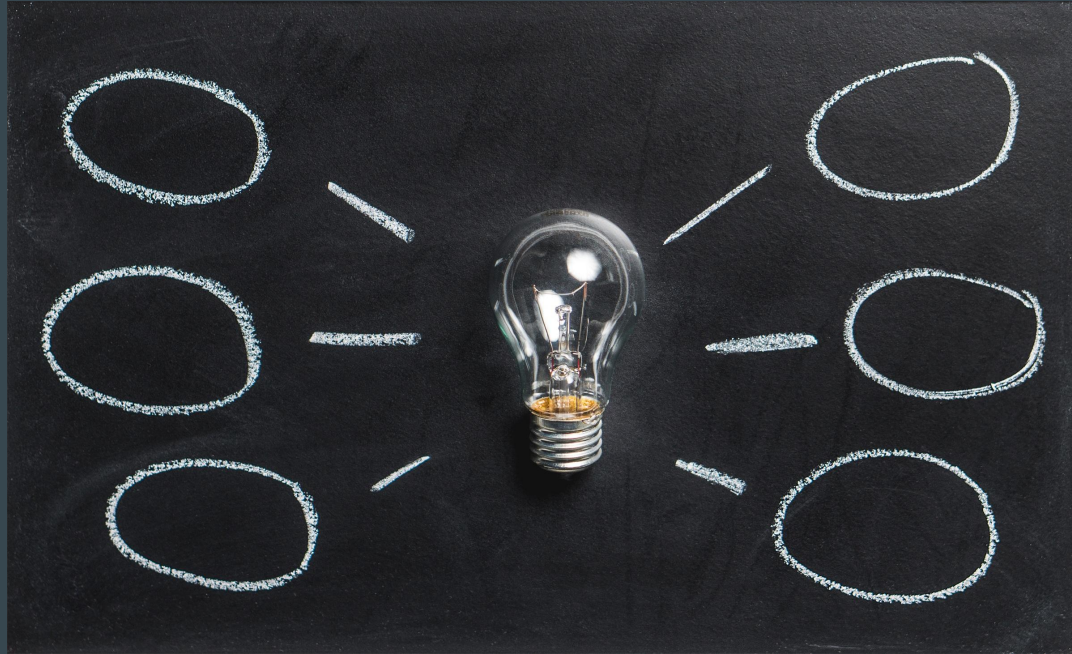
Our Charge

- Core Components of SBCT
 - Maintaining fidelity to the approach and continually evaluating outcomes
- Sustainability
 - A pathway to financial sustainability
 - Existing resources and services are leveraged
- Variety of Communities
 - Inclusive of communities that are under resourced, politically diverse, geographically varied
- Explicit Race and Equity Lens
 - Meeting the needs of all families, equitably

Understanding the WA Landscape

- Understanding the data for the zero to three population
- Identify child welfare and court community goals for babies and their families
- Addresses how the SBCT approach could help prevent infants and toddlers from coming into foster care in Washington
- Identify potential barriers to SBCT expansion
- Explore federal, state, and local funding opportunities
- Strategy for engaging legislature
- Design/outline state-level support for coordination across sites and evaluation
- And more!

What We Need From the Design Team



Designing Washington's Plan - How We Will Work Together

Purpose to Practice

- Purpose: What is our mission?
- Principles: What we must do and must not do to accomplish our mission?
- Practices: What will we produce?
- Structure: How will we organize our work to develop the plan?
- Participants: Who needs to be included?

Purpose - Design Team Mission

What we do:

Design a comprehensive Washington strategy

With/for whom:

With families, communities and system partners

To what end:

To keep at-risk babies and their families healthy, safe and well.

Principles - What we must do

- What we must do in order to accomplish our purpose?

Type into the Chat Box “Must do: [Your Answer]”

- Must do: Address disproportionality

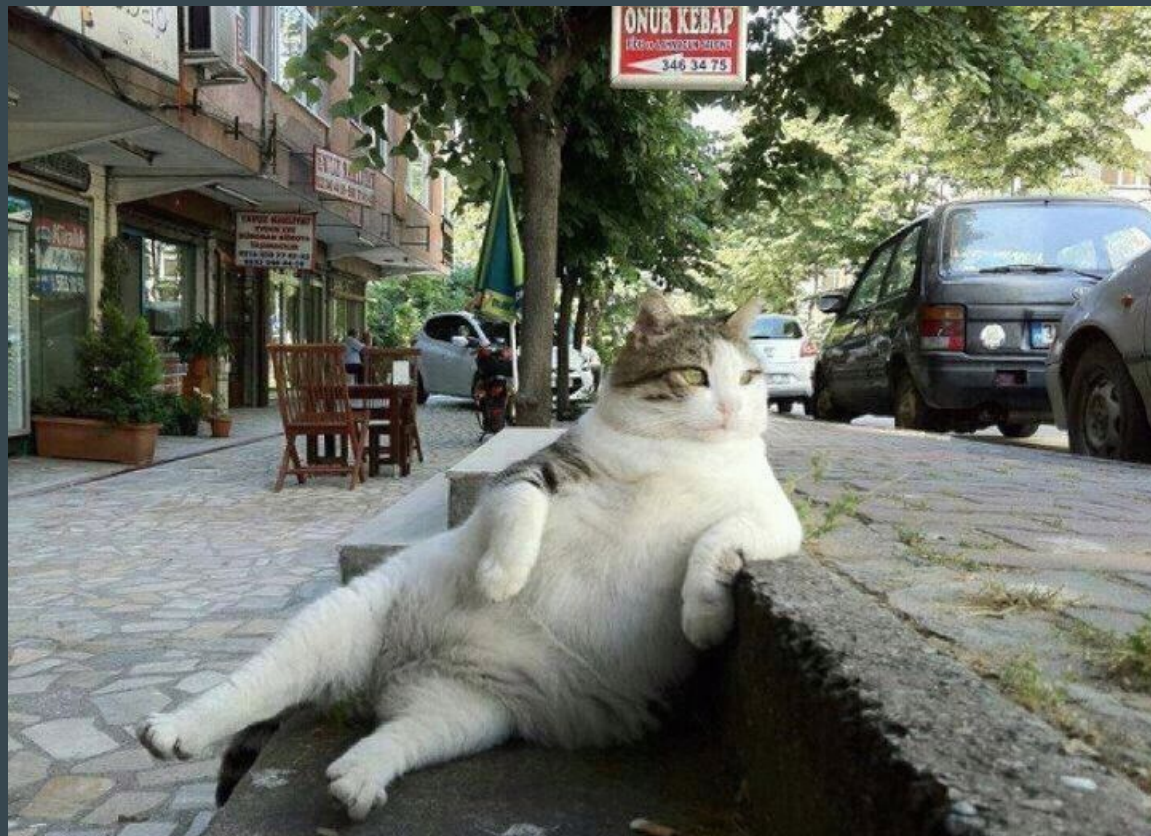
Principles - What we must not do

- What we must not do in order to accomplish our purpose?

Type into the Chat Box “Must not do: [Your Answer]”

- Must not do: Focus only on communities with resources

Break - Please return in 10 minutes



Principles - Must Do

- Address the needs of families of color
- Understand the cultural barriers that exist
- Develop strong messaging points to convince budget writers to support program viability
- Expand service array
- Support families post reunification
- Strengthen families to keep children safe in their own homes, prevent removal
- Include fathers

Design a comprehensive and inclusive Washington strategy with families, communities and system partners to keep babies and their families healthy, safe and well.

Principles - Must Not Do

- Operate within silos
- Create something that can't be sustained
- Assume what works for moms will work for fathers; exclude the needs of fathers
- Stop communicating or engaging with families
- Design a comprehensive and inclusive Washington strategy with families, communities and system partners to keep babies and their families healthy, safe and well.
- Be under informed about substance use and the most updated treatments
- Think that one strategy will work for everyone

Practice - The Plan

What else needs to be included
to develop this plan?



Structure: Virtual Workgroups

- Workgroups to research issues and develop ideas
- Each group will create a document outlining a component of the plan

Suggested Workgroups:

1. Local implementation
2. State level support
3. Data and evaluation
4. Funding
5. Legislation

Local Implementation Workgroup

- Types of local implementation - prevention, baby court, FTC/FRC
- Process for identifying and engaging communities
 - Criteria for site selection
 - Assessing readiness and identifying local resources
- Core components and local flexibility
- Staffing and caseload requirements
- Implementation and expansion planning
- Training and TA needs, resources

Resources: Pierce County's Best for Babies; other ZTT sites

State Level Support Workgroup

- Role of state level support
 - Ensure best practice
 - Coordination and training
 - Access to resources
 - Data and evaluation
- Structure
 - State team composition
 - Organizational home
 - Decision-making

Resources: Existing models - SBCT State Teams (FL, TN) and WA State FJCIP

Evaluation and Data Workgroup

- Development of evaluation plan
 - Theory of Change
 - Research objectives
 - Data collection and usage
 - Local and state CQI needs
- Database needs and options
 - ZTT database and reporting
 - Identify Washington-specific needs and opportunities
 - AOC, DCYF, other
- Staffing needs and budget

Resources: ZTT database, Pierce County Best for Babies, WSCCR and WA CIP

Funding Workgroup

- Develop budget
 - Local program implementation, operation and expansion
 - State team operations
 - Evaluation and data support
- Identify funding streams and opportunities
 - Federal
 - State
 - Local
 - Private (philanthropy)
- Sustainability plan

Resources: ZTT finance expert, ZTT court and state teams, Pierce Best for Babies

Legislation Workgroup

- Define the legislative structure and support needed
 - Key components of a bill
- Research examples
 - Review past WA legislation (SB 5494)
 - Review FL law
- Create legislative advocacy plan and goals
 - Short- and long-term
- Engage legislative champions

Resources: Legislation from other ZTT states, CWAC

Workgroup Structure

- Are these the right workgroups?
 - If not, what changes should we make?

Type your answers into the Chat Box
or raise hand to speak to the group



Participants - Workgroup Members and Facilitators

Workgroup Members

- Which workgroup would you like to be involved in?
- How would you like to be involved?

Type your answers into the Chat Box

- Example: State level workgroup, workgroup lead



Participants - Workgroup Members and Facilitators

Workgroup Members

- Who else should be invited to each workgroup?
 - This can be a name or organization

Type your answers into the Chat Box

- Example: Invite [Name], Funding Group



Final Product - Role Clarity

Workgroup:

- Deep dive research into specific topic areas
- Written recommendations for SBCT implementation in topic area

Design Team:

- Develop structure for implementation plan
- Review and provide feedback for Workgroup write-ups
- Provide feedback on final report

CCYJ:

- Write implementation plan, developed from recommendations from Workgroups and Design Team

Implementation Plan Deadline: July 31, 2020

Next Steps and Closing

- CCYJ to send out follow-up materials and coordinate workgroup dates
 - Workgroups formed and leads identified
 - Each workgroup will have met at least once by next DT meeting
-
- For questions, contact: Michelle Williams at mwilliams@ccyj.org

Next Meeting: Monday: May 18, 10:00 a.m. - 11:30 a.m.

Thank you for your participation!