

## Nurse Case Management

SUPPORTING THE WHOLE CHILD  
*Strategies, practices, and programs of intervention for children who are chronically absent from school or engaging in at-risk behavior*

## BRIEF NOTES:

### Capital Region Educational Service District #113

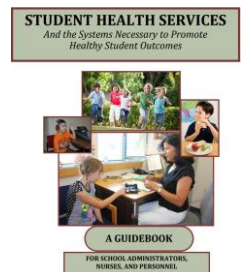
- Lynn Nelson, MSN, RN, NCSN - Director, Health Services and Student Support
- Barbara Peoples, RN - School Nurse Corps
- Todd Johnson, Ph.D. – Program Director, Center for Research and Data Analysis



# Washington State's School Nurse Corps Program

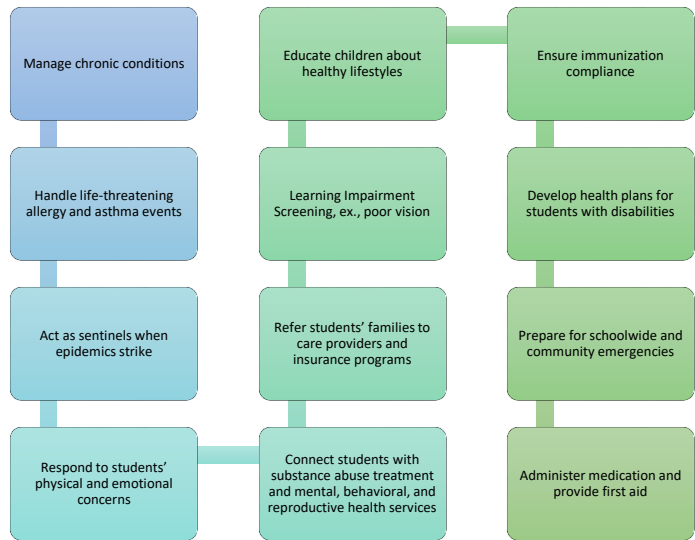
## Objective:

Learn about the impact of physical health conditions and school environment on school attendance, and case management by nurses for chronically absent students.



# Things School Nurses Do

## Traditional School Nursing, School Nurse Corps, & Nurse Case Management



# School Nurse Corps Services



FUNDING FOR DIRECT NURSING SERVICES



COORDINATE RN SERVICES FOR SMALL, RURAL DISTRICTS THAT DO NOT HAVE THE CAPACITY OR THE EXPERTISE TO COMBINE RESOURCES TO SHARE SCHOOL NURSE POSITIONS ACROSS MULTIPLE SMALL DISTRICTS



RECRUIT AND RETAIN RNS



ORIENT, TRAIN AND MENTOR RNS



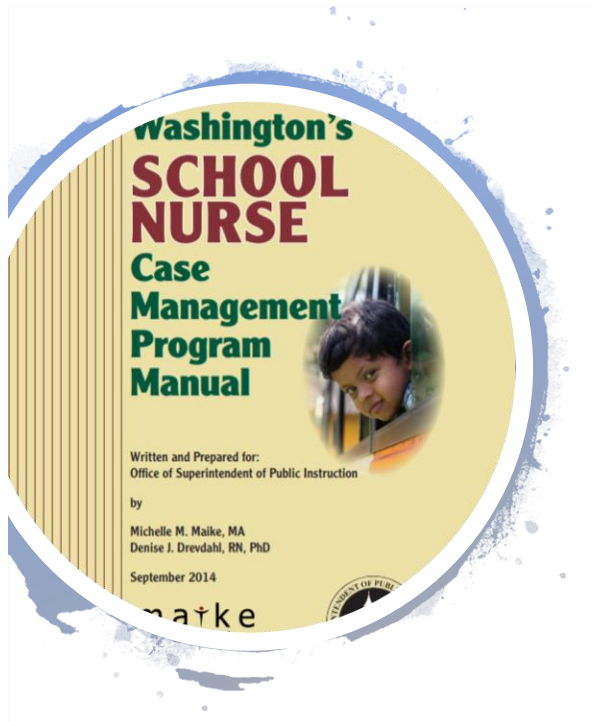
CONSULTATION, TECHNICAL ASSISTANCE, RESOURCES



PROFESSIONAL DEVELOPMENT OPPORTUNITIES



PROMOTING STUDENT HEALTH, SAFETY AND ACADEMIC ACHIEVEMENT THROUGH COLLABORATION WITH OTHER ORGANIZATIONS THAT SERVE CHILDREN, YOUTH AND FAMILIES



## School Nurse Case Management



### Modified Check and Connect

- Grade Check
- Attendance Check
- Health Condition Issues/Referrals



### School Nurse Case Management

- Individual
- Groups
- Classroom

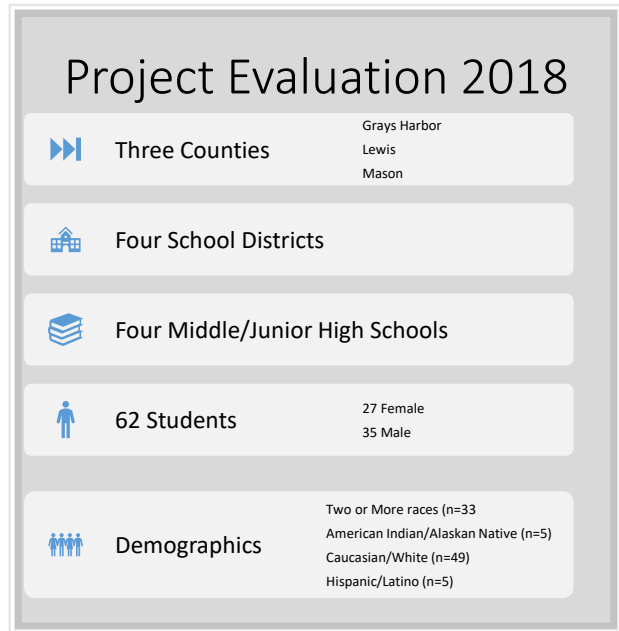
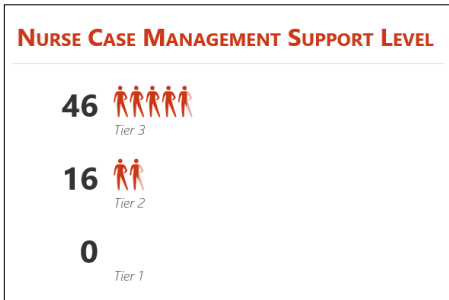
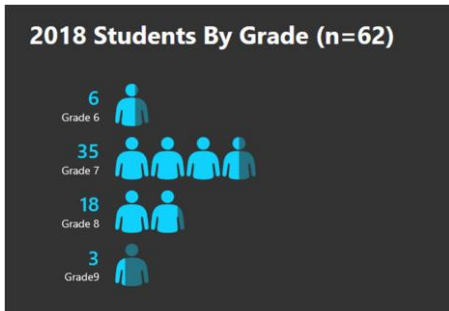
5



## School Nurse Case Management Providing One-On-One Services

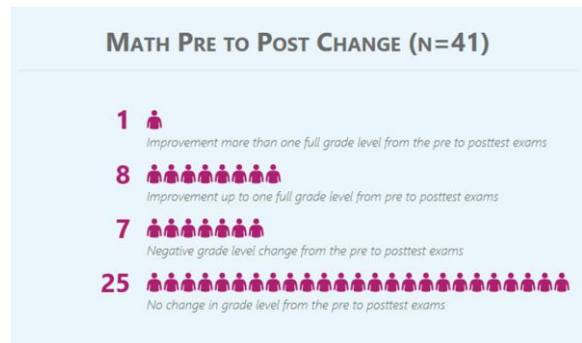
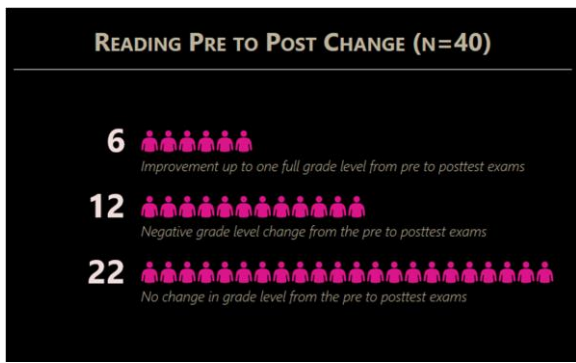
- Assisting Youth to:
  - **Overcome barriers**
  - **Return to/stay in school**
  - **Improve attendance**
  - **Improve school coordination**
  - **Re-engage youth in schools**
  - **Parent engagement in schools**

6



7

# Achievement Change



8

## Next Steps



**Sample Size.** As we started looking at more demographic variables like that of attendance, gender, & grade level the sample size really started to get too small.



**Student Interventions.** We also really want to explore more regarding the type and frequency of student intervention supports being accessed from the nurses by the students



**Attendance Patterns.** We would also like to capture and explore the variables regarding when students miss, i.e., (start of term vs. end of term, day or days of the week missed)



**Control Groups.** Near future need to control and capture other variables like the type of health concern, demographics, and even explore a virtual control group by matching our sample with NWEA's nationally representative samples.



**Unique Data System.** In the future it may be beneficial to explore a Longitudinal School Nursing Data System. "A national clinical database describing school health will allow education and health leaders to build evidence-based programs for children." For example, 5 broad categories describing Staffing; Risk Management; Health Promotion; Episodic Care; and Care Coordination



**Secure Funding.** Sustainability and scaling of the project to impact more students is limited due to the lack of a consistent funding mechanism for case management services.

Johnson, K. H., Bergren, M. D. & Westbrook, L.O. (2011). The promise of standardized data collection: School health variables identified by states. *Journal of School Nursing*, published online November 7, 2011. doi: 10.1177/1059840511426434

9

Goal is to have enough Registered Nurse time in schools to allow full scope of practice, including Nurse Case Management

We know that the extent that nurses can incorporate Case Management will vary widely across districts, and we also know that all nurses can implement SOME Case Management, even if it is only for a very small number of students. The goal is to staff professional Registered Nurses in each school in Washington State so that they can practice to the full scope of their licensure, including the provision of Nurse Case Management services to those students who need that level of care.

## *Thank You*