



2018 Community Assessment Update

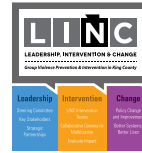
Presented by


Michelle M. Maike, Director
Megan B. Osborne, Research Associate



Reducing youth and young adult group/gang involvement in suburban King County

Creation of the LINC Steering Committee



Phase 1: Strengthening coordination and collaboration among all involved agencies

Phase 2: Implementation of three multidisciplinary intervention teams to deliver and coordinate services to youth and families.

LINC 1 – Highline, Renton, & Tukwila school districts

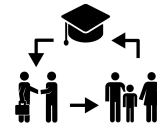
LINC 2 – Auburn, Federal Way, & Kent school districts

Seattle LINC – South-end neighborhoods of Seattle

INTRO

Defining Community

Community = school district

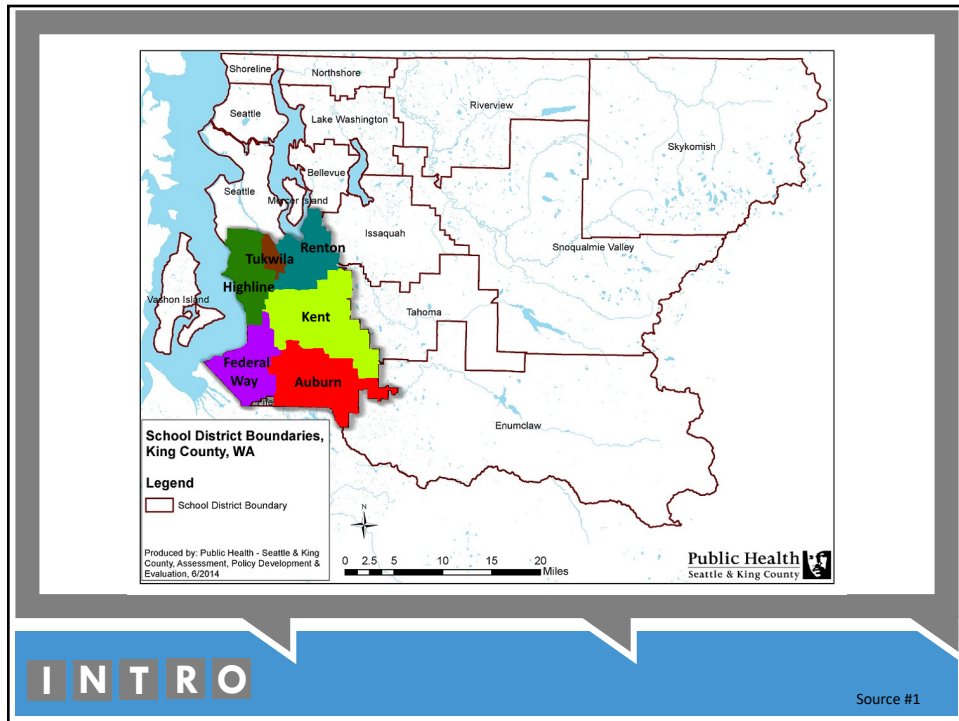


As school districts typically include multiple cities, this encourages interagency and cross-jurisdictional partnerships

Suburban King County

Auburn, Burien, Federal Way, Kent, Renton, SeaTac, and Tukwila

INTRO



2016 Community Demographics

	Washington	Auburn	Burien	Federal Way	Kent	Renton	SeaTac	Tukwila
Population	7,288,000	77,472	50,997	96,757	127,514	100,953	28,873	20,033
Male	49.8%	49.4%	50.3%	49.0%	49.9%	49.5%	52.4%	51.9%
Female	50.2%	50.6%	49.7%	51.0%	50.1%	50.5%	47.6%	48.1%
White	69.7%	60.8%	51.2%	49.1%	47.1%	47.4%	34.0%	33.0%
African American	3.5%	4.3%	6.9%	11.0%	10.3%	10.5%	22.5%	19.9%
American Indian / Alaskan Native	1.2%	1.9%	1.2%	0.8%	0.7%	0.4%	0.9%	0.6%
Asian	7.9%	9.7%	10.3%	13.2%	17.6%	22.1%	15.1%	22.3%
Hawaiian / Pacific Islander	0.6%	1.8%	1.6%	1.9%	2.5%	1.1%	2.9%	2.1%
Two or More Races	4.6%	6.8%	5.1%	6.2%	5.0%	6.2%	6.3%	7.0%
Hispanic / Latino	12.4%	14.5%	23.6%	17.6%	16.6%	12.3%	17.8%	14.2%
Other	0.1%	0.2%	0.1%	0.1%	0.2%	0.1%	0.5%	0.0%
Non-English Speakers	19.3%	26.5%	33.9%	31.3%	39.9%	34.8%	48.1%	50.0%
Foreign Born	13.5%	17.9%	22.9%	23.4%	28.5%	28.2%	37.6%	41.4%
Unemployed	5.4%	4.1%	4.0%	4.1%	4.1%	3.6%	4.3%	-
In Poverty	11.3%	14.5%	17.4%	13.5%	15.2%	11.9%	18.1%	21.5%
Education - High School Diploma	90.6%	87.4%	83.2%	89.4%	85.4%	90.1%	83.4%	80.3%

ONE Community Demographics

Source #2



Auburn

Minority Population
39.2% (▲8.9)

Non-English Speakers
26.5% (▲7.2)

Foreign Born
17.9% (▲4.4)

In Poverty
14.5% (▲3.2)

High School Diploma
87.4% (▼3.2)



Washington State

Minority Population
30.3%

Non-English Speakers
19.3%

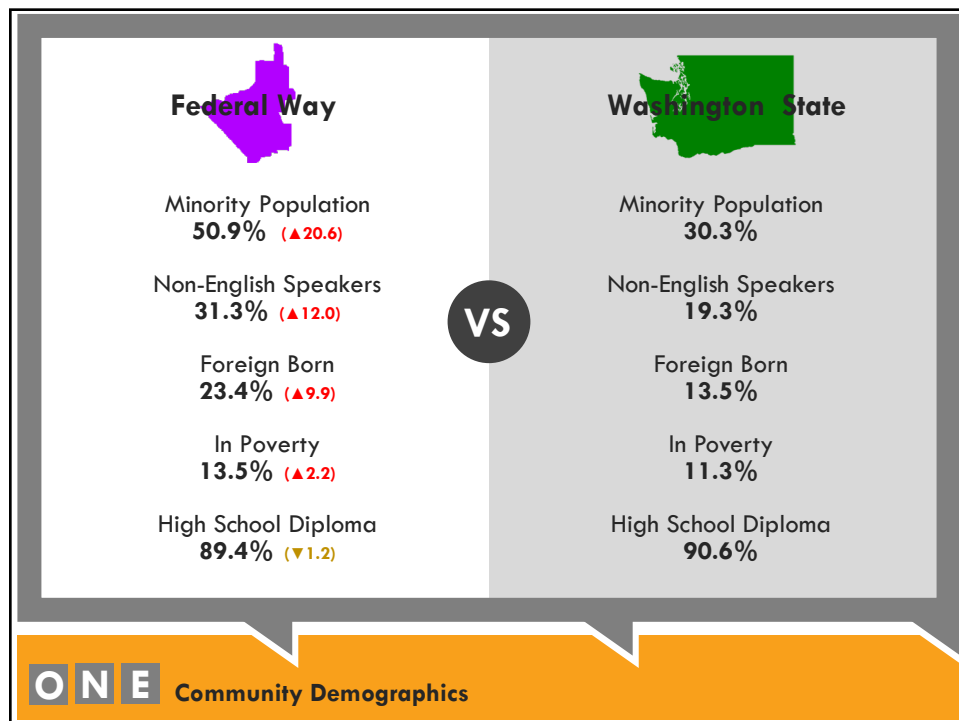
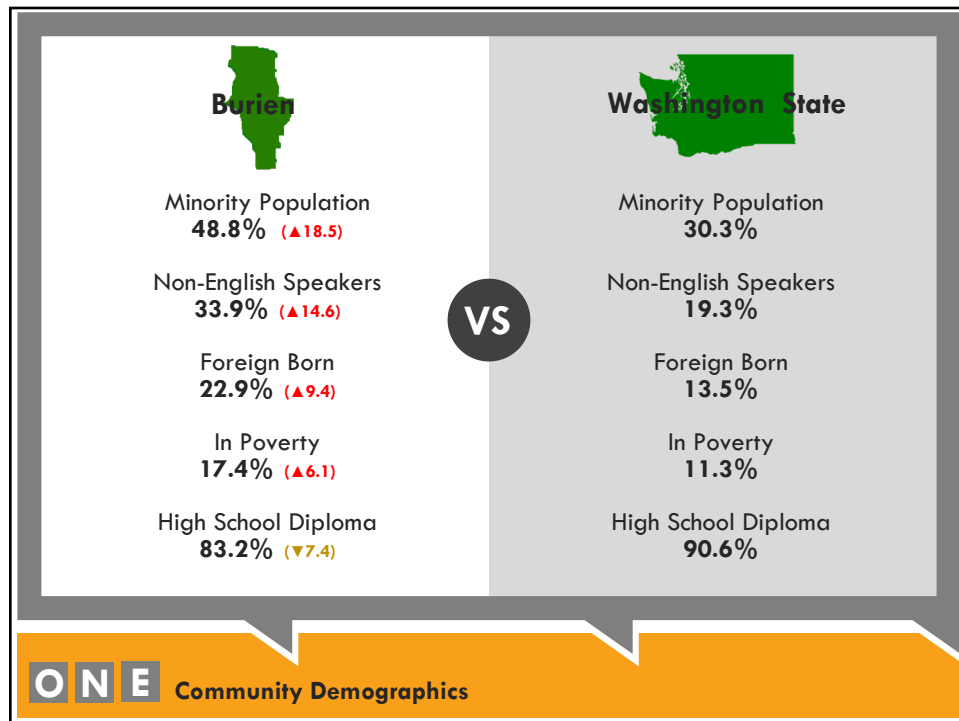
Foreign Born
13.5%

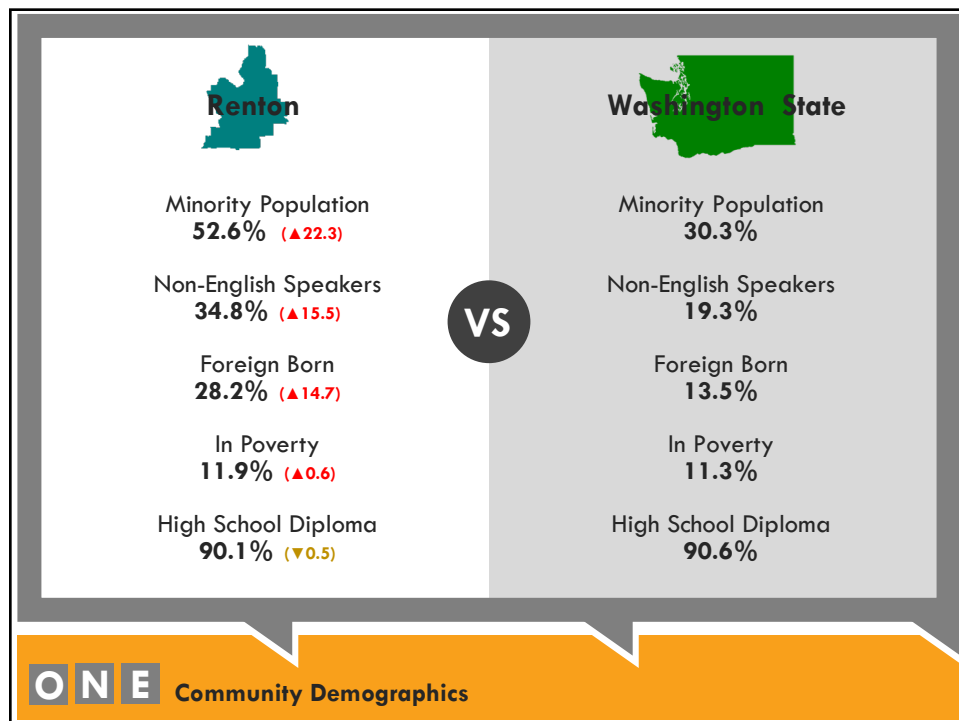
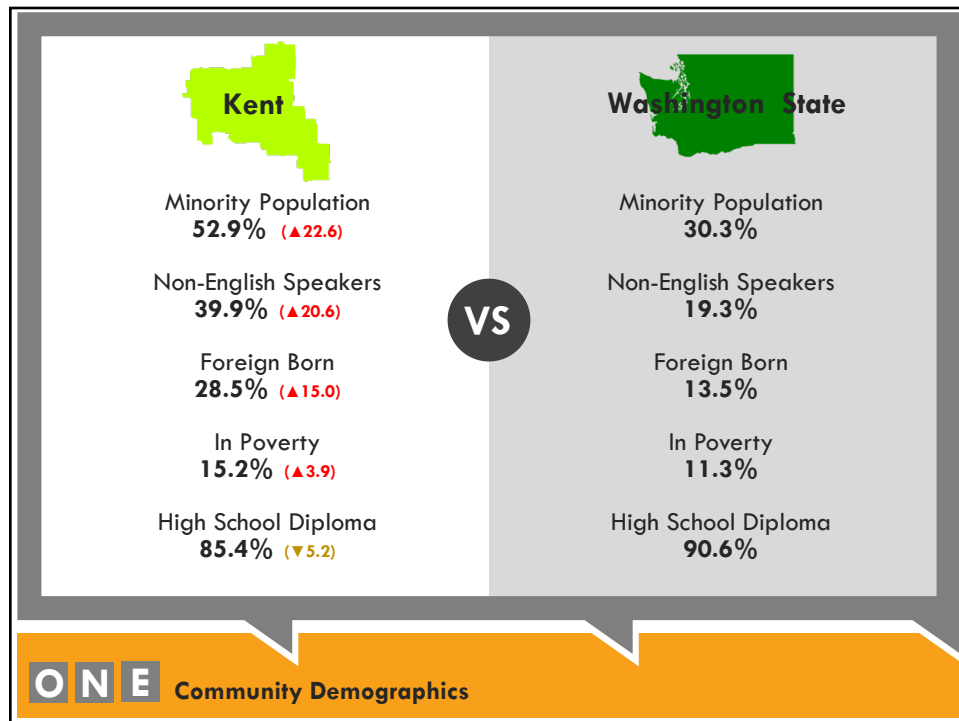
In Poverty
11.3%

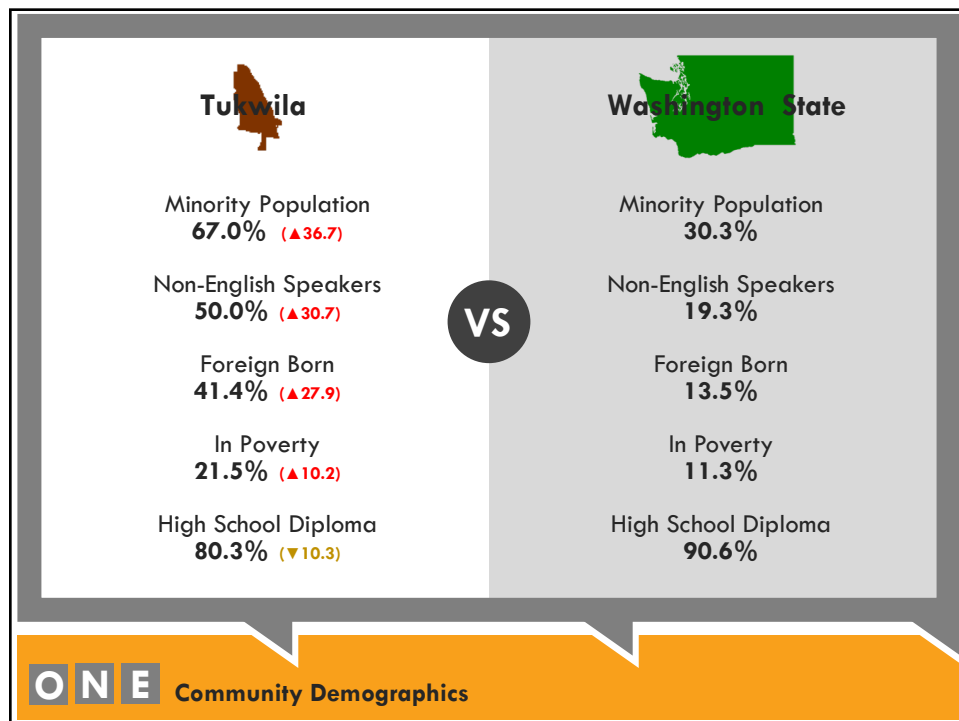
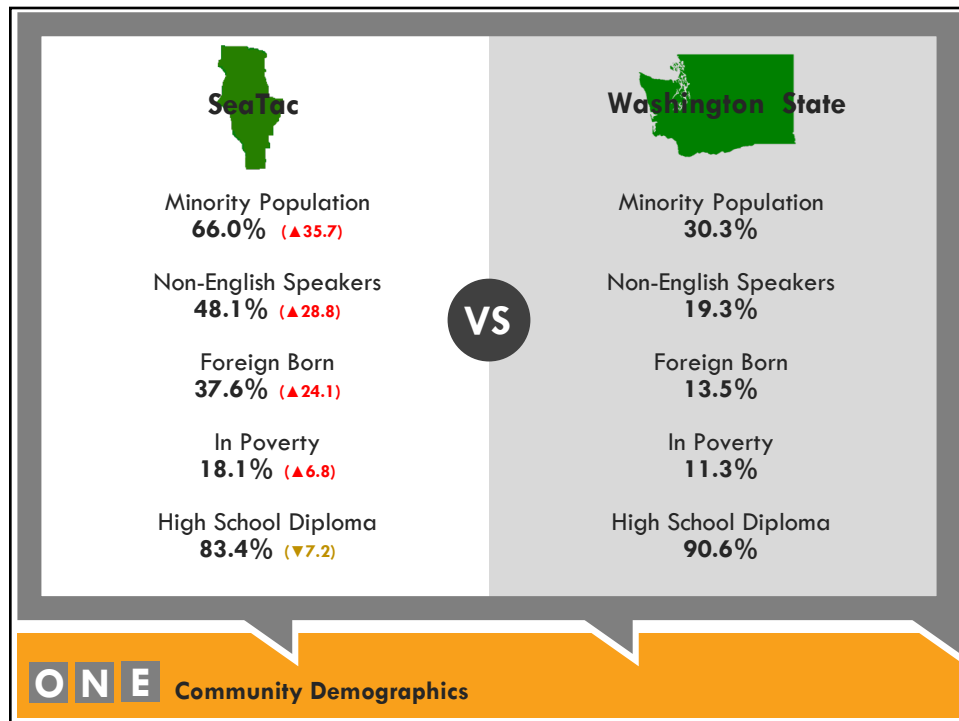
High School Diploma
90.6%

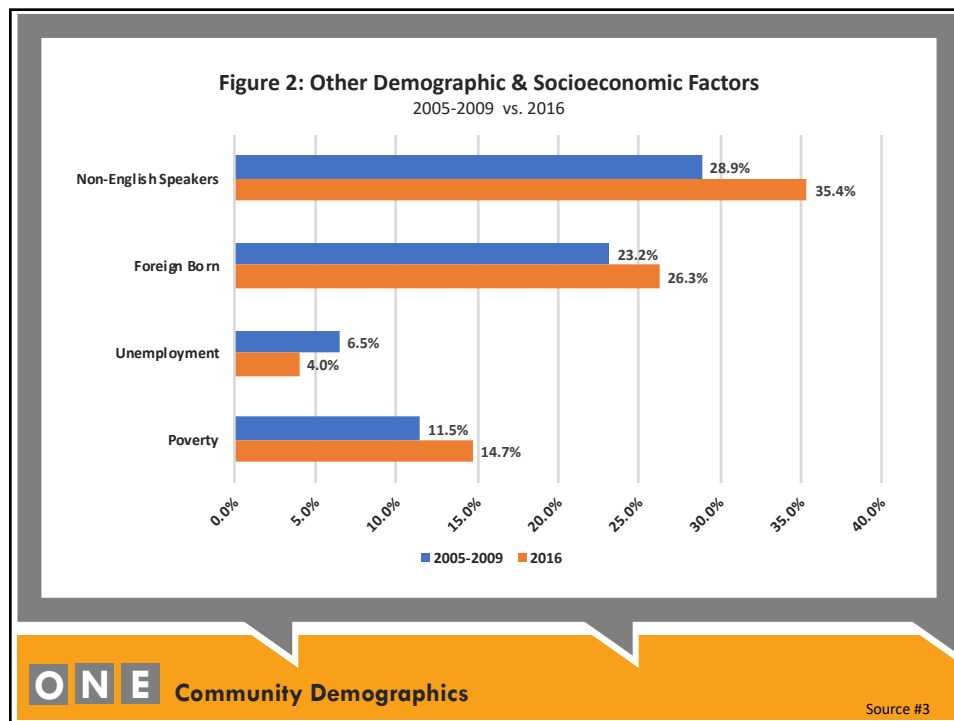
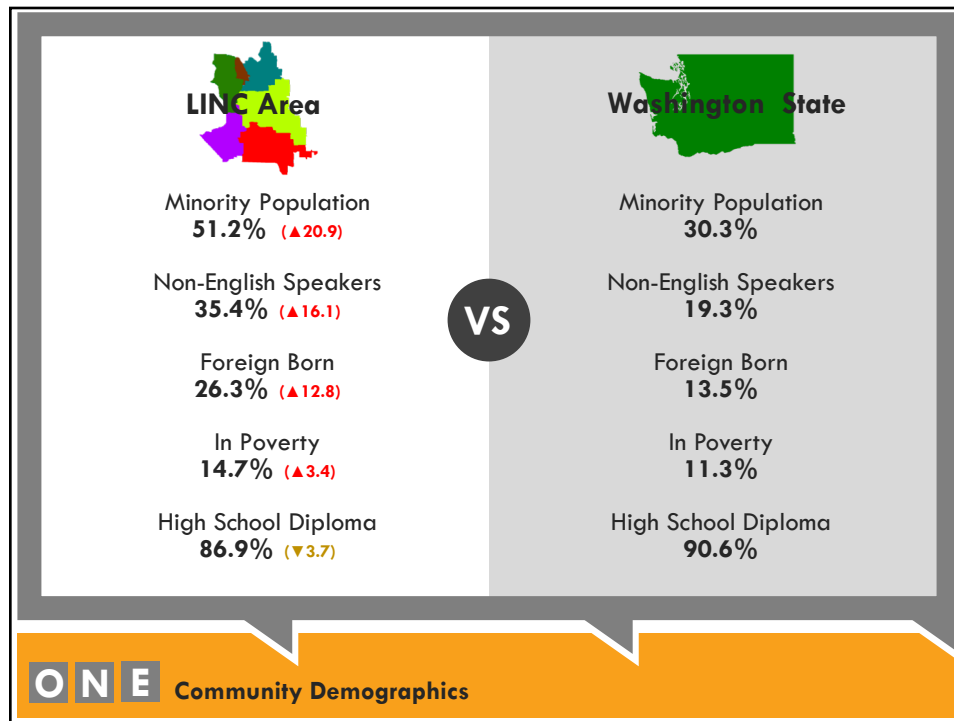
VS

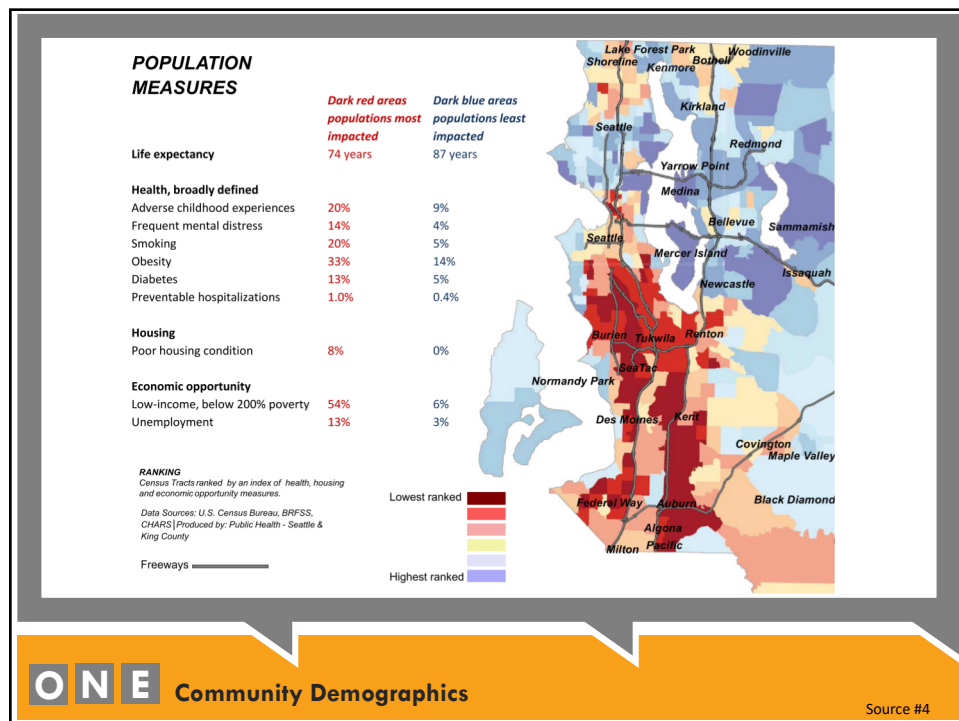
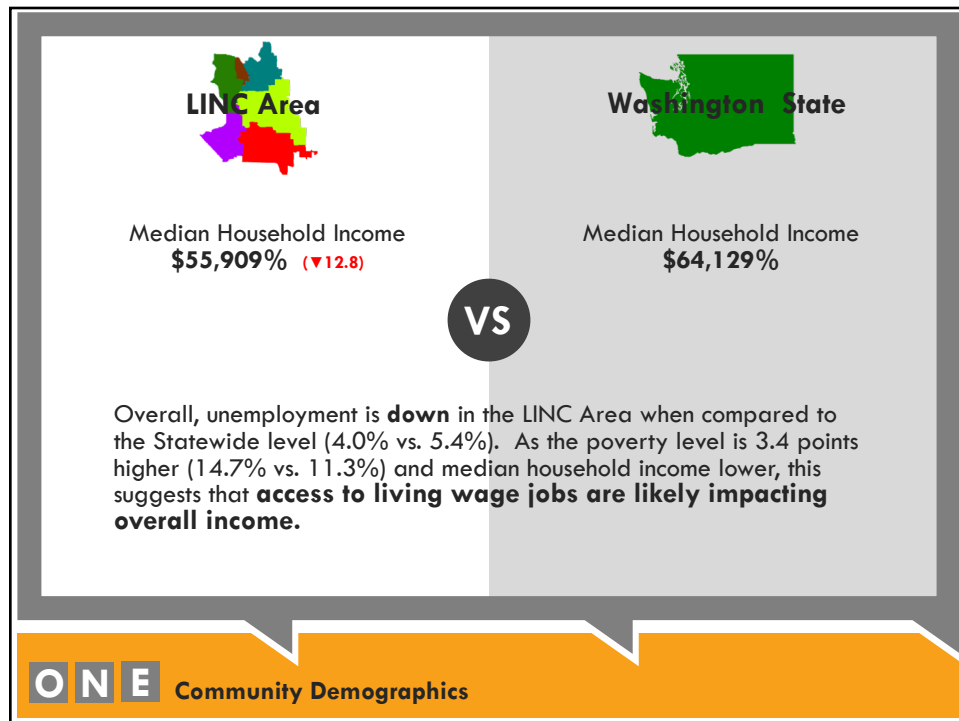
ONE Community Demographics











Community Demographics Factors Linked to Gang/Group Membership & Formation



Rapid population growth from 2005-2016



Relatively high and increasing poverty rates compared to state averages



Higher population of foreign-born & non-English speakers



Higher numbers of risk factors (health, housing, economic opportunity, etc.)



Lower levels of education compared to state averages

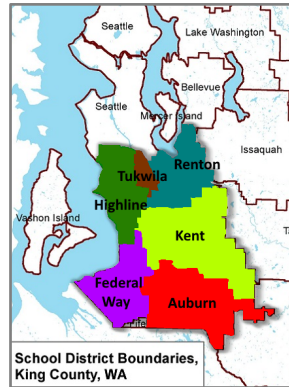
ONE

Community Demographics

TWO

Student & School Characteristics

LINC Area School Districts



Auburn
Federal Way
Highline
Kent
Renton
Tukwila

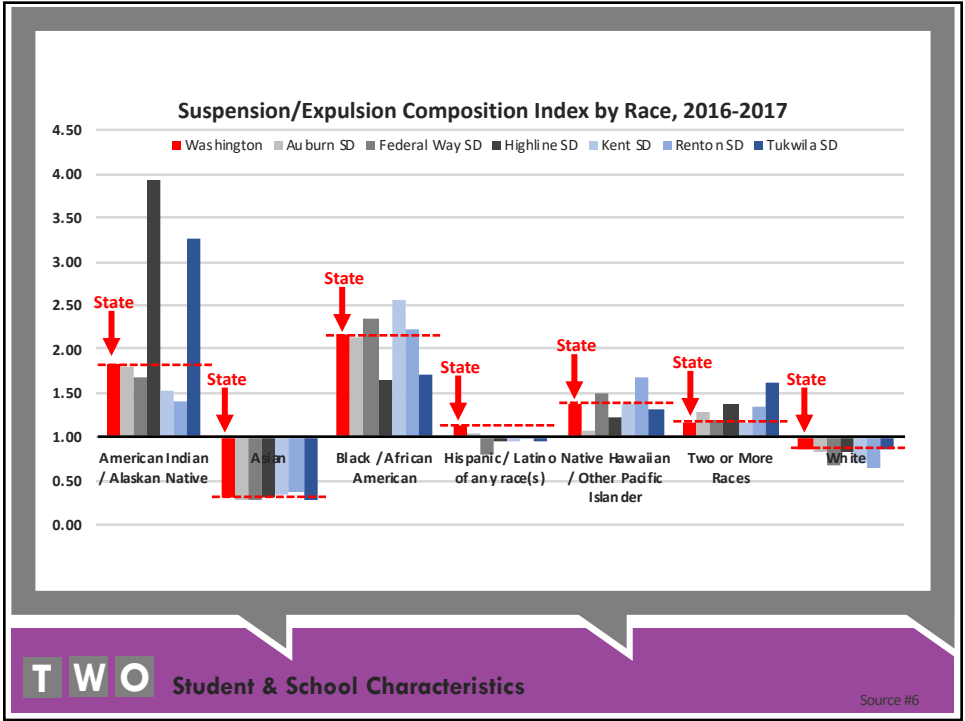
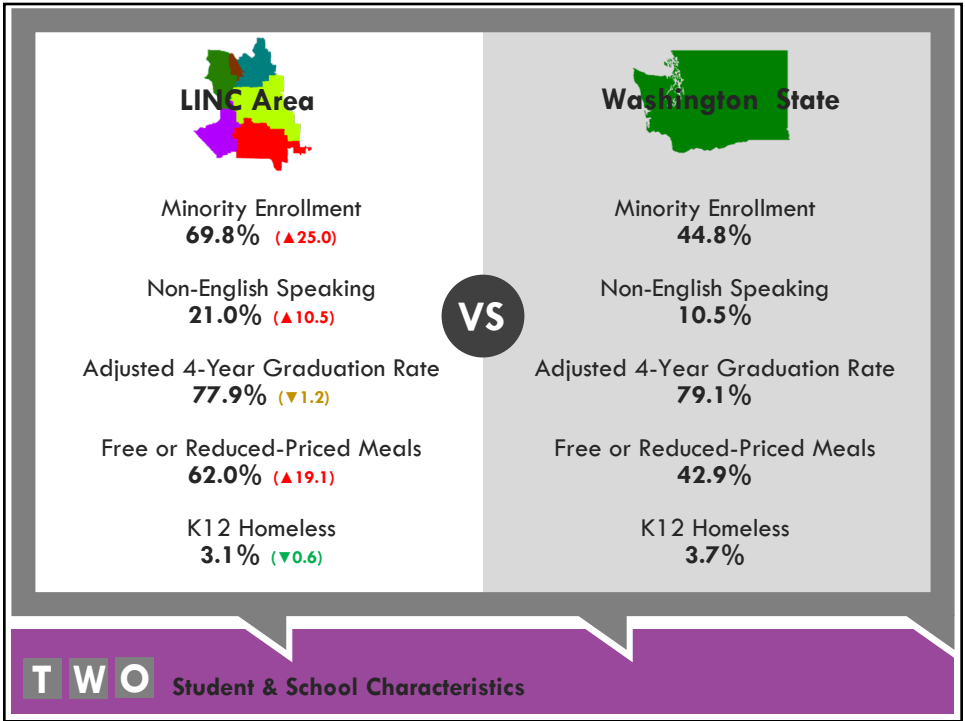
TWO Student & School Characteristics

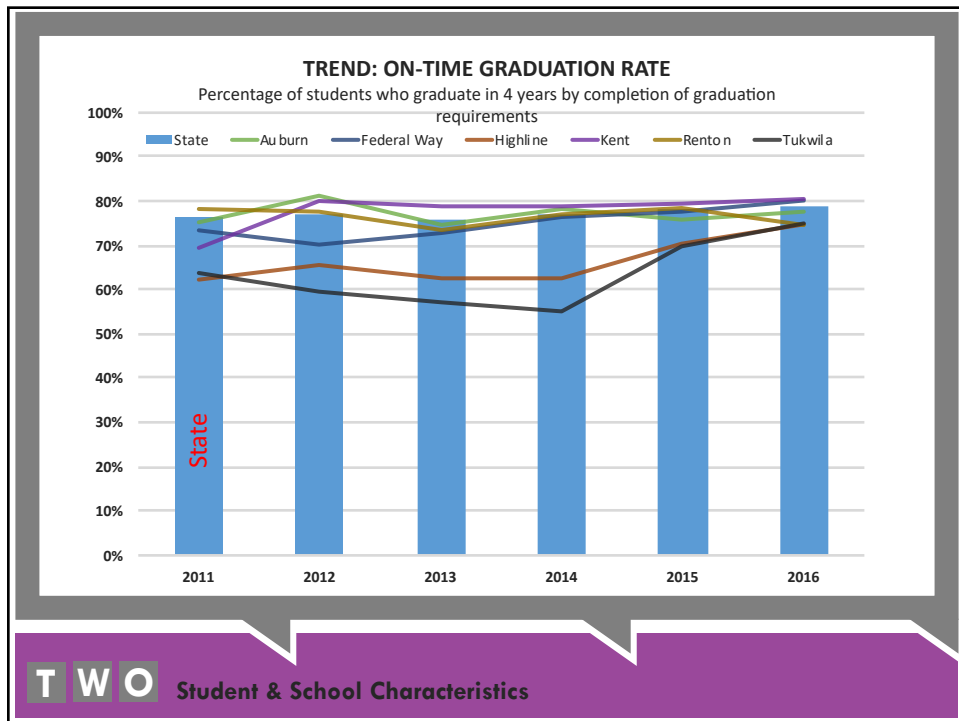
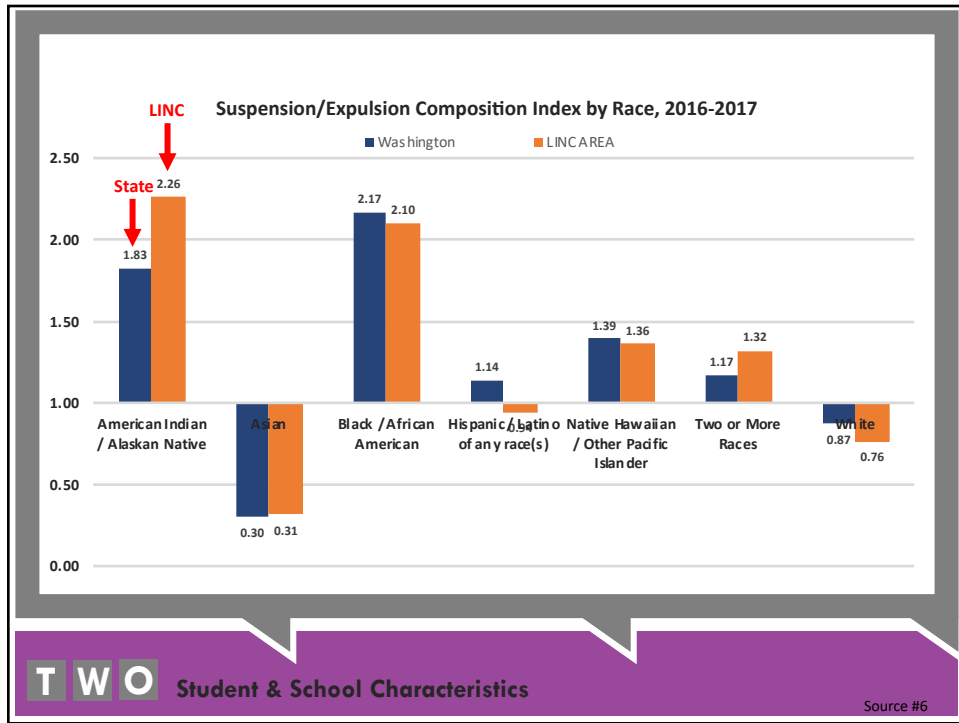
2016 Student Enrollment Demographics

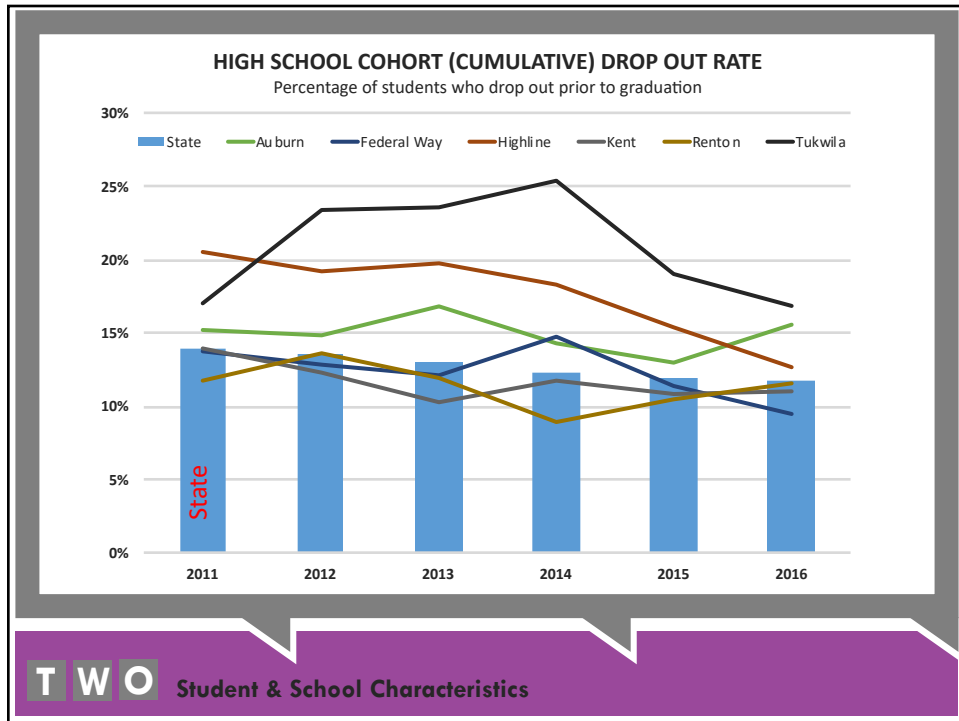
	Washington	Auburn SD	Federal Way SD	Highline SD	Kent SD	Renton SD	Tukwila SD
K12 Enrollment (October 2016)	1,102,282	16,134	23,024	19,730	27,841	15,804	2,990
American Indian / Alaskan Native	1%	1%	1%	1%	0%	1%	1%
Asian	8%	9%	11%	14%	19%	25%	28%
Black / African American	4%	7%	13%	14%	12%	15%	20%
Hispanic / Latino of any race(s)	23%	29%	29%	38%	22%	23%	29%
Native Hawaiian / Other Pacific Islander	1%	4%	5%	4%	3%	1%	4%
Two or More Races	8%	10%	12%	6%	10%	8%	7%
White	55%	41%	28%	23%	35%	27%	12%
Male	52%	51%	52%	52%	52%	51%	51%
Female	48%	49%	48%	48%	48%	49%	49%
Free or Reduced-Price Meals	43%	52%	60%	63%	75%	50%	73%
Adjusted 4-Year Graduation Rate (2016 Cohort)	79%	78%	80%	75%	81%	75%	75%
Non-English Speaking Enrollment	11%	18%	20%	26%	19%	18%	40%
K12 Homelessness	4%	2%	2%	6%	2%	3%	11%

TWO Student & School Characteristics

Source #4







THREE

Washington State Healthy Youth Survey

Groups/Gangs in Schools

Asked of 8th and 10th grade LINC Area students (Oct. 2016)



Are there gangs at your school?

&

*During the past 12 months, have you
been a member of a gang?*

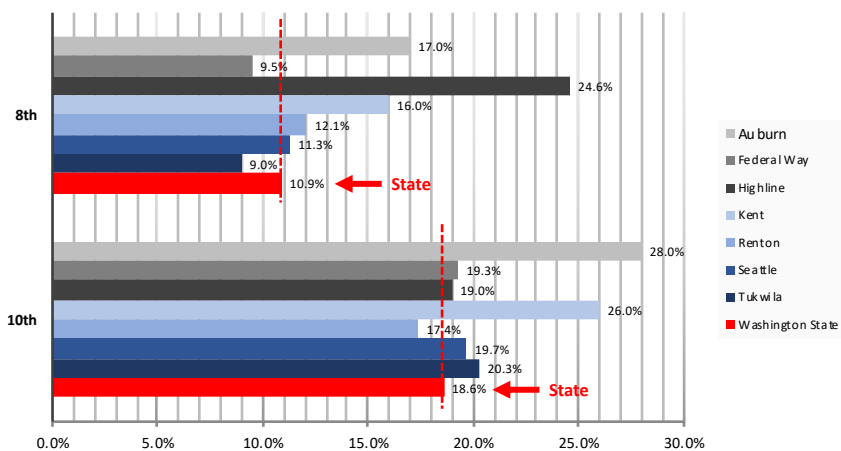


T H R E E

Washington State Healthy Youth Survey

"Are there gangs in your school?"

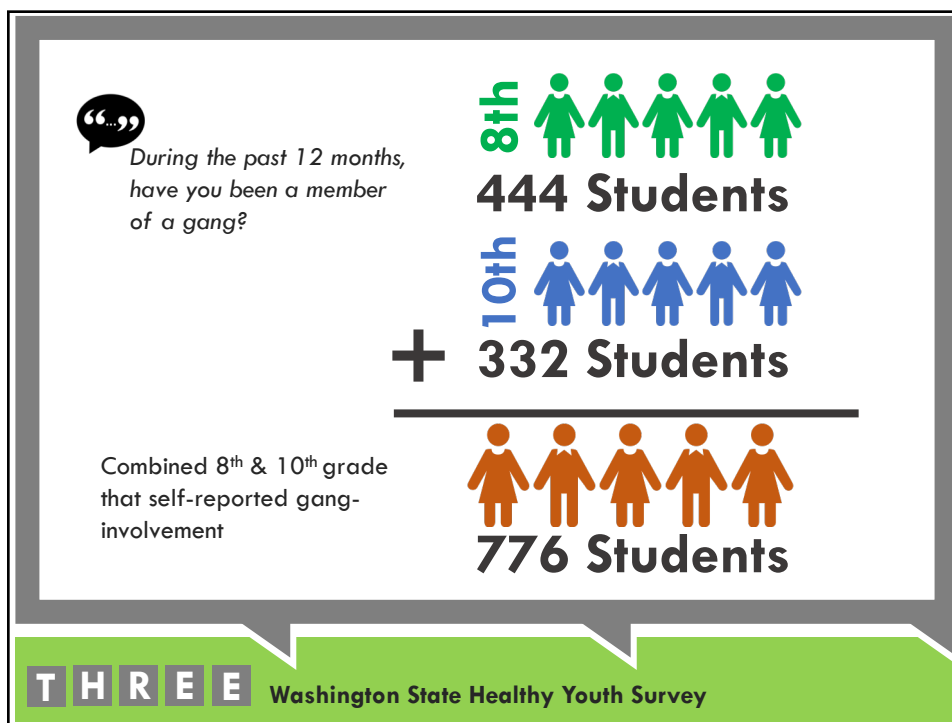
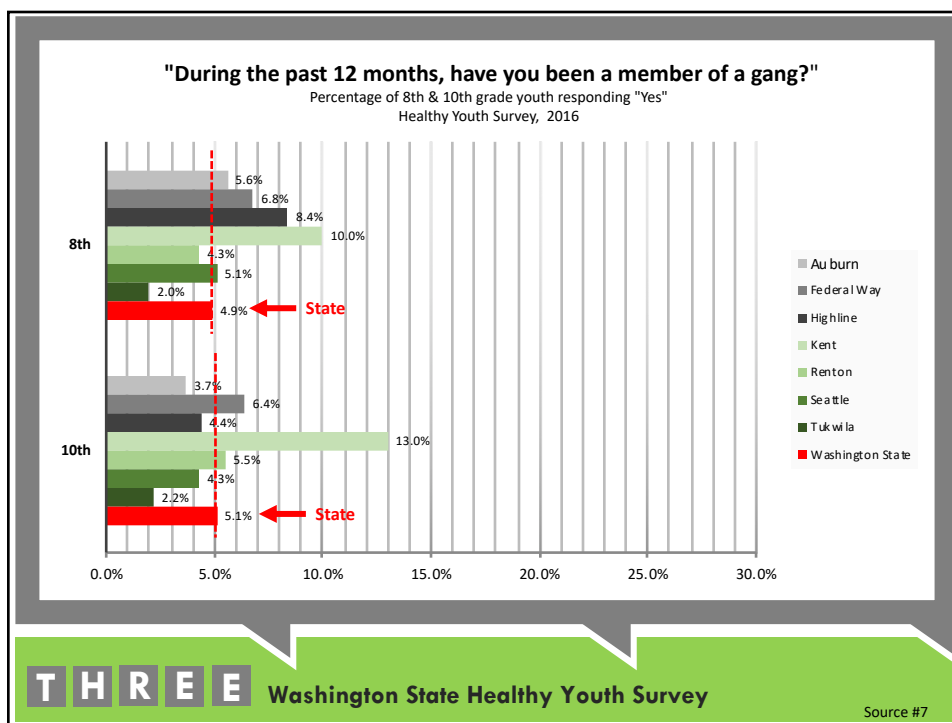
Percentage of 8th & 10th grade youth responding "Yes"
Healthy Youth Survey, 2016



T H R E E

Washington State Healthy Youth Survey

Source #7



Groups/Gangs in Schools

Asked of 8th and 10th grade LINC Area students (Oct. 2016)



During the past 12 months, were you in a physical fight?

&

During the past 30 days, did you Carry a gun (anywhere)?

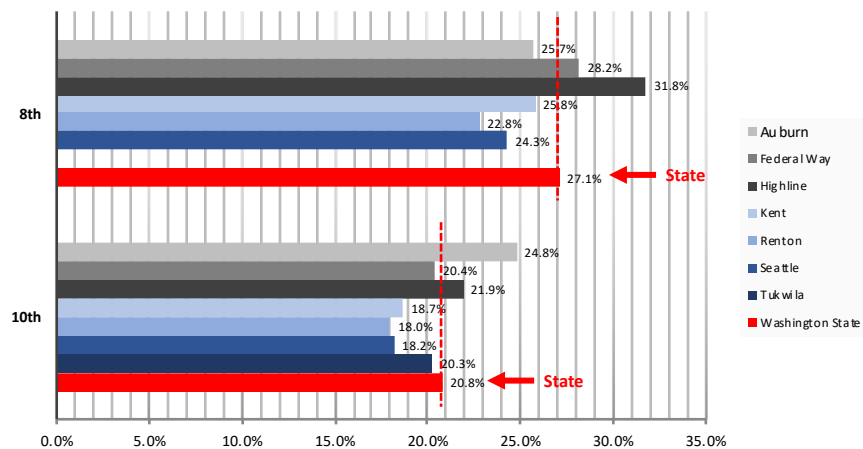


T H R E E

Washington State Healthy Youth Survey

"During the past 12 months, were you in a physical fight?"

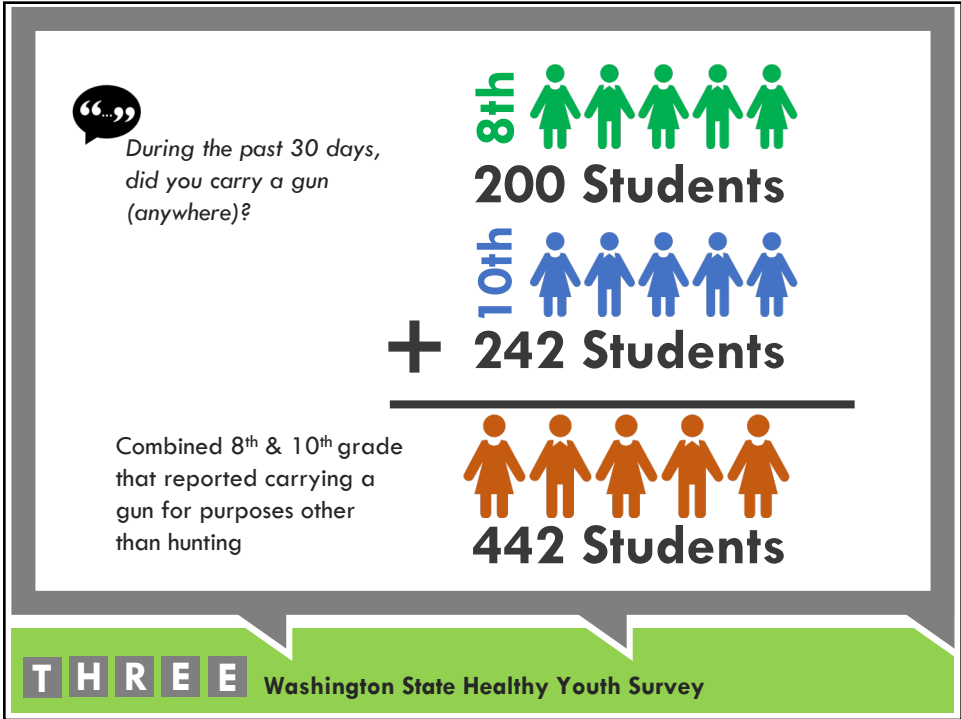
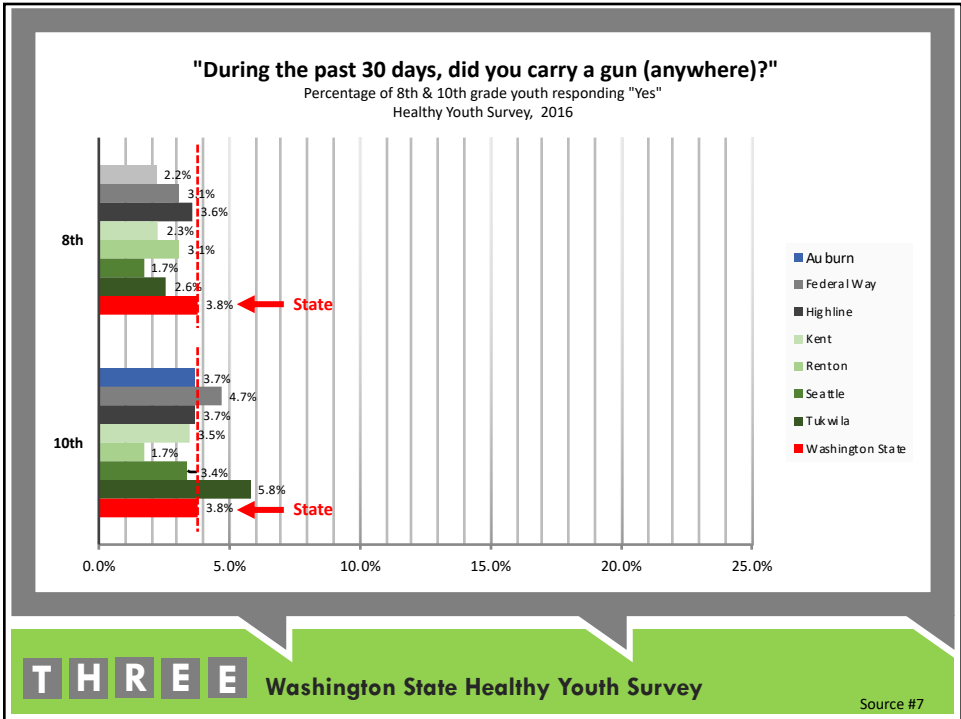
Percentage of 8th & 10th grade youth responding "Yes"
Healthy Youth Survey, 2016



T H R E E

Washington State Healthy Youth Survey

Source #7



Groups/Gangs in Schools

Asked of 8th and 10th grade LINC Area students (Oct. 2016)



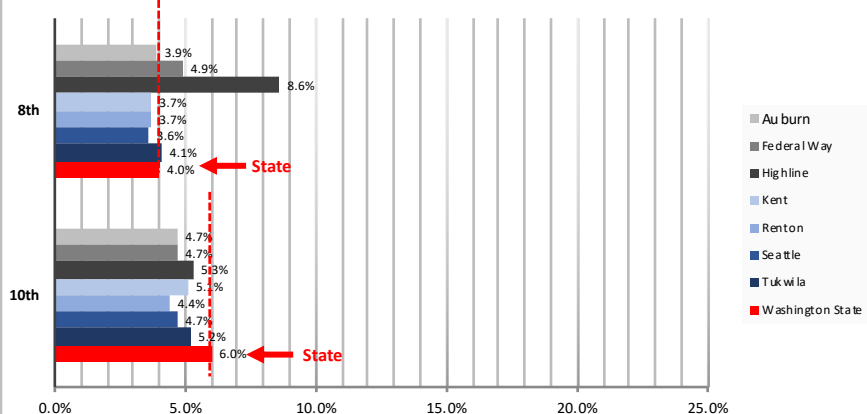
During the past 30 days, did you carry a weapon such as a gun, knife, or club on school property?

T H R E E

Washington State Healthy Youth Survey

"During the past 30 days, did you carry a weapon such as a gun, knife, or club on school property?"

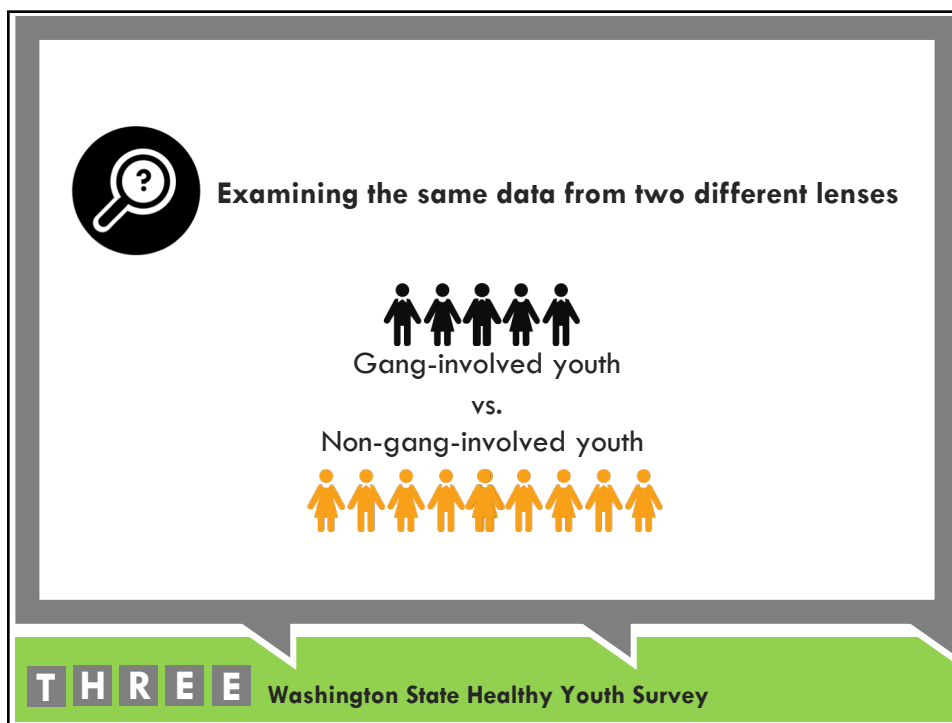
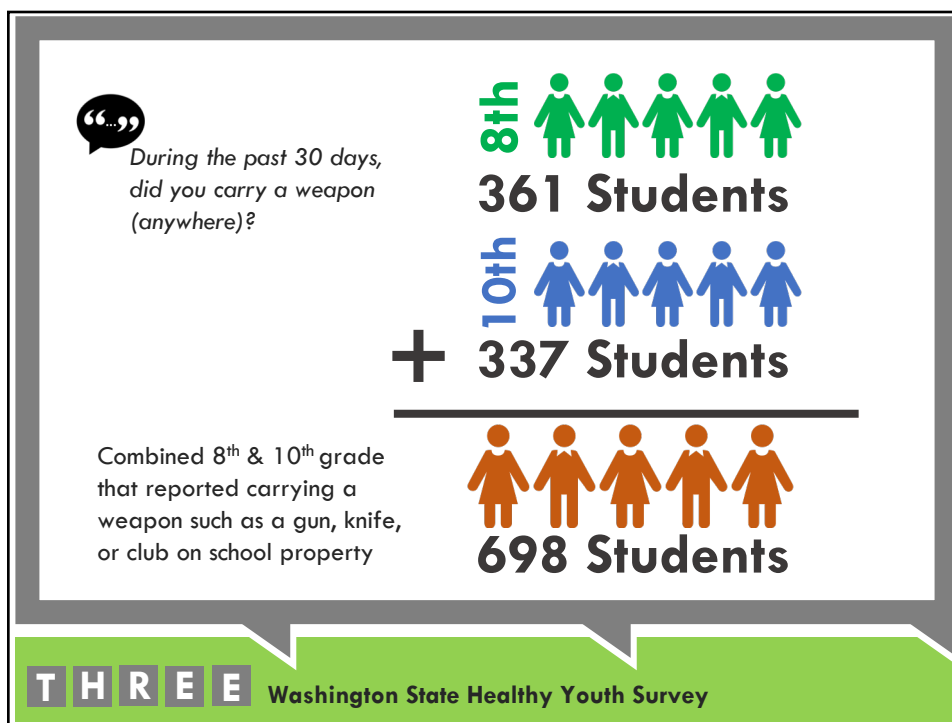
Percentage of 8th & 10th grade youth responding "Yes"
Healthy Youth Survey, 2016



T H R E E

Washington State Healthy Youth Survey

Source #7





Are there gangs at your school?

District	Grade	Gang involved	Not Gang involved	Gang vs. Non-Gang	
Auburn	8	40%	16%	▲	24%
	10	48%	27%	▲	21%
Federal Way	8	26%	8%	▲	18%
	10	38%	18%	▲	20%
Highline	8	50%	23%	▲	27%
	10	46%	18%	▲	29%
Kent	8	34%	8%	▲	27%
	10	54%	13%	▲	41%
Renton	8	48%	11%	▲	37%
	10	53%	15%	▲	37%
Seattle	8	40%	10%	▲	31%
	10	48%	18%	▲	30%

T H R E E

Washington State Healthy Youth Survey

Source #7



Past 12 months - physical fight ("yes")?

District	Grade	Gang involved	Not Gang involved	Gang vs. Non-Gang	
Auburn	8	57%	24%	▲	33%
	10	64%	18%	▲	46%
Federal Way	8	58%	25%	▲	33%
	10	50%	18%	▲	32%
Highline	8	71%	27%	▲	44%
	10	-	-		
Kent	8	54%	24%	▲	30%
	10	55%	17%	▲	39%
Renton	8	50%	21%	▲	29%
	10	44%	16%	▲	27%
Seattle	8	62%	25%	▲	37%
	10	53%	19%	▲	35%

T H R E E

Washington State Healthy Youth Survey

Source #7



Past 30 days – carry a weapon (“yes”)?

District	Grade	Gang involved	Not Gang involved	Gang vs. Non-Gang	
Auburn	8	34%	2%	▲	32%
	10	38%	4%	▲	34%
Federal Way	8	31%	3%	▲	28%
	10	29%	3%	▲	26%
Highline	8	45%	5%	▲	39%
	10	-	-		
Kent	8	23%	3%	▲	20%
	10	30%	4%	▲	27%
Seattle	8	23%	3%	▲	20%
	10	29%	5%	▲	24%

T H R E E

Washington State Healthy Youth Survey

Source #7



School risk – low commitment to school?

District	Grade	Gang involved	Not Gang involved	Gang vs. Non-Gang	
Auburn	8	42%	36%	▲	6%
	10	-	-		
Federal Way	8	54%	31%	▲	22%
	10	54%	38%	▲	16%
Highline	8	64%	39%	▲	25%
	10	-	-		
Kent	8	56%	31%	▲	26%
	10	-	-		
Renton	8	-	-		
	10	56%	37%	▲	19%
Seattle	8	57%	34%	▲	23%
	10	62%	38%	▲	25%

T H R E E

Washington State Healthy Youth Survey

Source #7



Community risk – laws and norms favorable to drug use?

District	Grade	Gang involved	Not Gang involved	Gang vs. Non-Gang
Auburn	8	46%	19%	▲ 27%
	10	-	-	
Federal Way	8	39%	26%	▲ 14%
	10	57%	30%	▲ 28%
Highline	8	49%	30%	▲ 19%
	10	-	-	
Kent	8	36%	21%	▲ 15%
	10	-	-	
Renton	8	-	-	
	10	44%	25%	▲ 19%
Seattle	8	49%	22%	▲ 28%
	10	51%	26%	▲ 24%

T H R E E

Washington State Healthy Youth Survey

Source #7

HYS – Putting it all together

LINC Area
17% - 28%

Are there gangs
at your school?
(10th grade only)

Washington State
18.6%

2.2% - 13%

Past 12 months –
gang membership
(10th grade only)

5.1%



776
Gang
Membership

442
Carried
a Gun

698
Carried a
Weapon

T H R E E

Washington State Healthy Youth Survey

FOUR

Community Risk & Crime

Community Risk Factors: Juvenile Delinquency and Juvenile Crime

Weapons Incidents in School: Rate per 1,000

	2007	2008	2009	2010	2011	2012	2013	2014	2015	2016
State	3.07	2.92	2.85	2.80	2.66	2.61	2.00	1.89	1.78	1.68
LINC Area	4.20	4.26	4.08	3.59	3.16	2.76	2.59	2.01	2.23	2.26
Comparison	1.13	1.34	1.23	0.79	0.50	0.15	0.59	0.12	0.45	0.58

*LINC Area – Auburn, Federal Way, Highline, Kent, Renton, Seattle, & Tukwila

Total Arrests of Adolescents (Age 10-17): Rate per 1,000

	2006	2007	2008	2009	2010	2011	2012	2013	2014	2015
State	48.41	48.97	45.54	41.43	39.37	37.13	26.75	27.67	25.64	23.68
LINC Area	48.60	47.35	38.86	33.70	30.47	22.83	21.16	21.97	22.46	18.82
Comparison	0.19	-1.62	-6.68	-7.73	-8.90	-14.30	-5.59	-5.70	-3.18	-4.86

Tukwila	UN	UN	UN	UN	UN	168.40	146.14	203.57	197.93	184.36
---------	----	----	----	----	----	--------	--------	--------	--------	--------

*LINC Area – Auburn, Federal Way, Highline, Kent, Renton, & Seattle

Community Risk Factors: Juvenile Delinquency and Juvenile Crime

Arrests (Age 10-17), Property Crime (rate per 1,000)

	2006	2007	2008	2009	2010	2011	2012	2013	2014	2015
State	15.71	16.32	15.41	13.75	12.40	12.27	8.93	8.34	7.77	6.93
LINC Area	16.91	17.58	17.16	13.55	14.14	9.73	9.76	8.85	8.21	5.76
Comparison	1.20	1.26	1.75	-0.20	1.74	-2.54	0.83	0.51	0.44	-1.17

Tukwila	UN	UN	UN	UN	UN	122.84	115.07	139.74	118.53	109.02
---------	----	----	----	----	----	--------	--------	--------	--------	--------

*LINC Area – Auburn, Federal Way, Highline, Kent, Renton, & Seattle

Arrests (Age 10-17), Violent Crime (rate per 1,000)

	2006	2007	2008	2009	2010	2011	2012	2013	2014	2015
State	2.25	2.46	2.25	2.31	2.13	1.80	1.48	1.66	1.59	1.55
LINC Area	3.15	3.41	3.13	3.79	2.61	2.09	1.73	2.26	2.30	2.01
Comparison	0.90	0.95	0.88	1.48	0.48	0.29	0.25	0.60	0.71	0.46

Tukwila	UN	UN	UN	UN	UN	3.46	1.73	0.58	2.88	2.85
---------	----	----	----	----	----	------	------	------	------	------

*LINC Area – Auburn, Federal Way, Highline, Kent, Renton, & Seattle

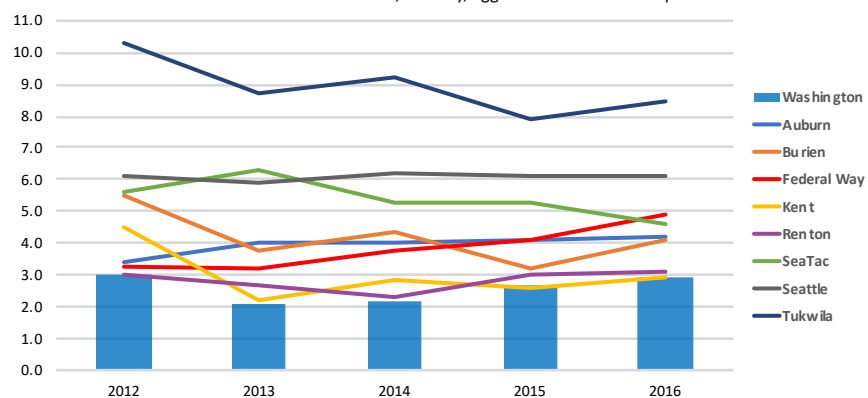
FOUR Community Risk & Crime

Source #8

Community Risk Factors: Violent Crime and Crime Rate

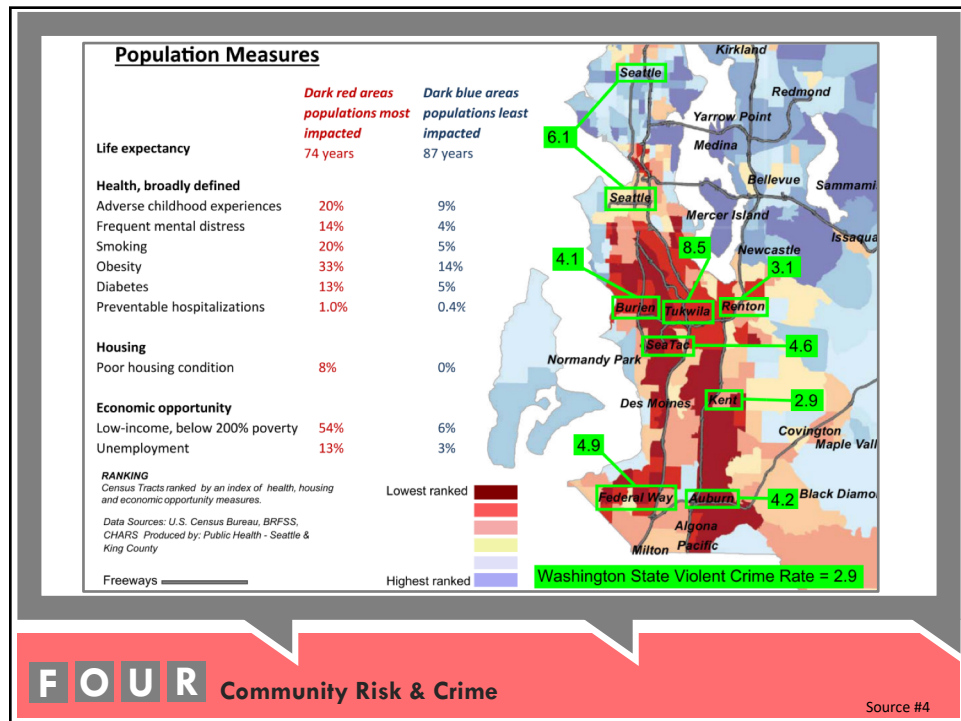
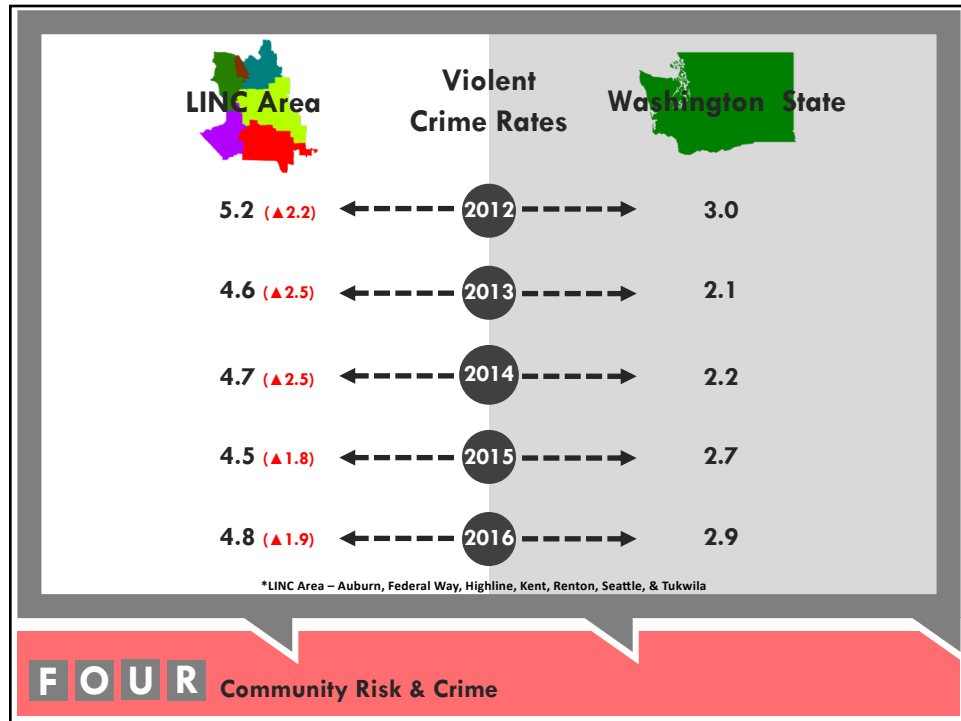
Trend Violent Crime Rate/1,000 (2012-2016)

Combine rate of homicide, robbery, aggravated assault and rape



FOUR Community Risk & Crime

Source #9



Group Audits



Conducted individual group audits with partner law enforcement agencies within the LINC Area

Group

/groop/

noun

1. *"any durable, street-oriented (youth or adult) group whose involvement in illegal activity is part of its group identity"*

FIVE

Group/Gang-involved Population

Group Audits



1. Identify the groups operating within each city/jurisdiction
2. Answer questions regarding characteristic of each group
3. Identify group relationships (i.e. conflicts & alliances)

FIVE

Group/Gang-involved Population

South King County Group Audit

50 Total unique groups identified across the LINC Area

830-2600 Estimated group members

19-60 Average size of each group, reaching up to 600 members

Group Characteristics



40% Hispanic

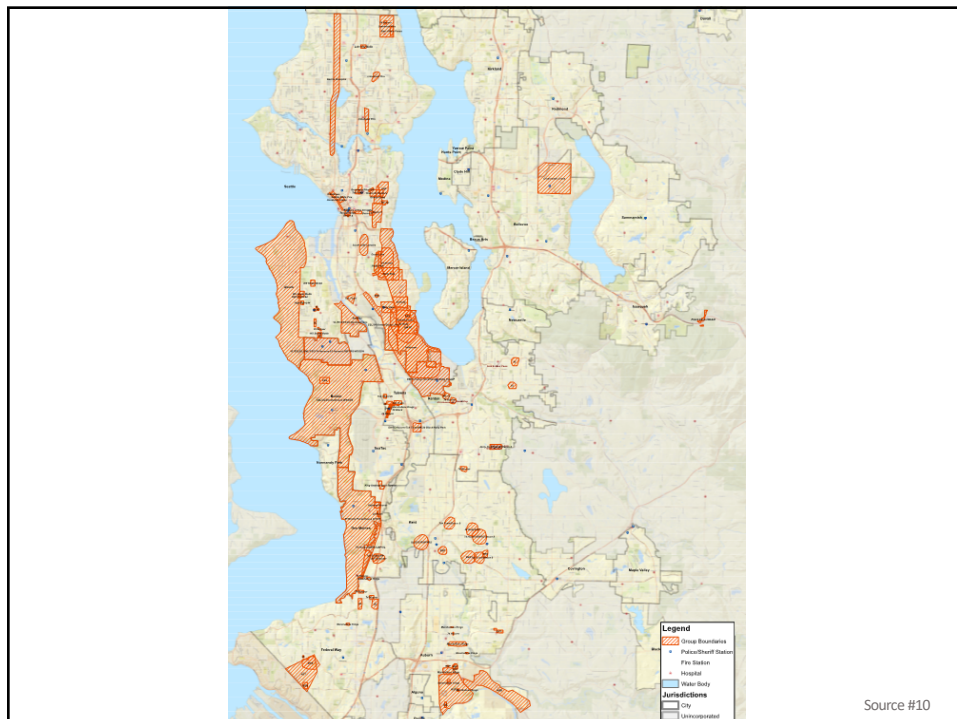
32% Black American

15-33 average age

---> (primary race/ethnicity)

FIVE

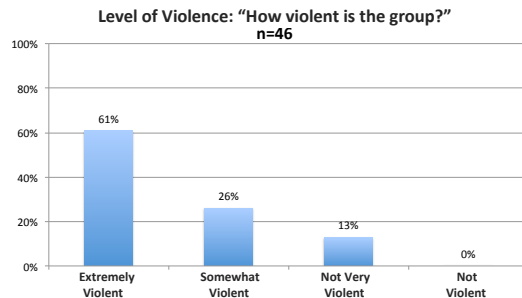
Group/Gang-involved Population



Criminal Activities, Violence, and Organization



When asked about core criminal activities of each group, **74%** were identified as being involved in violent crime (e.g., shootings, armed robberies, other gun-related offenses)



FIVE

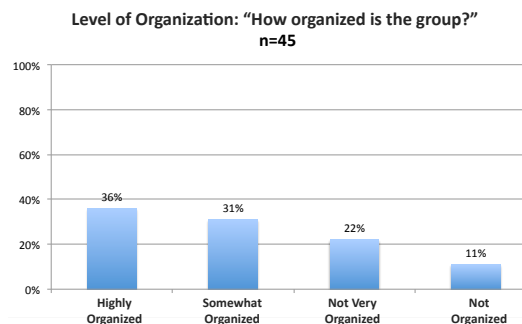
Group/Gang-involved Population

Source #10

Criminal Activities, Violence, and Organization



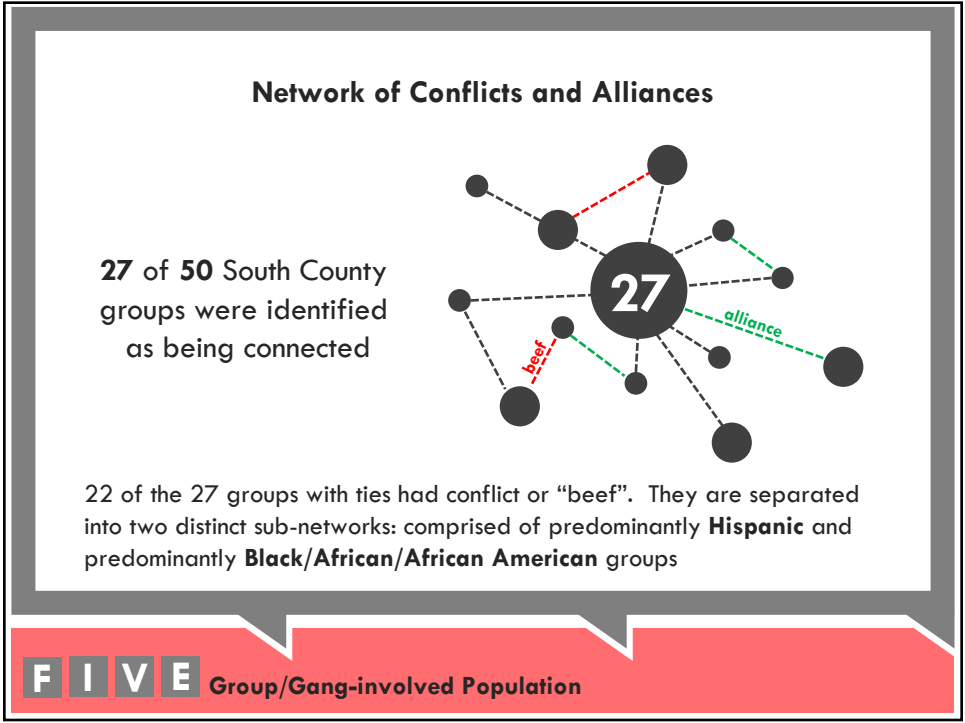
When asked to indicate the level of organization among the groups, the majority were found to have limited organization



FIVE


Group/Gang-involved Population

Source #10



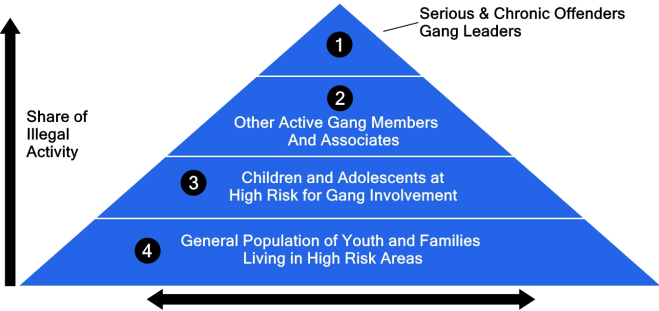


Recommendations



Recommendation 5: Appropriately distribute prevention, intervention and suppression resources

Gang Response and Involvement Pyramid



S


I

X

Recommendations

Source #11

Recommendations



Recommendation 6: Continue to collect and validate group related data

- ➔ Share gang/group intelligence both within and across agencies.
- ➔ Put in place policies for the collection, maintenance, and sharing of group intelligence across agencies
- ➔ Utilize school & community-based data in addition to law enforcement data

S

I

X

Recommendations

Sources

1. Public Health – Seattle & King County. Assessment, Policy Development & Evaluation (06/2014)
2. US Census Quick Facts 2016
3. American Community Survey (ACS) 2016
4. Seattle & King County Public Health, 2016
5. Office of Superintendent of Public Instruction 2017 *Adjusted cohort = Students are included in the cohort based on when they first entered 9th grade. The cohort is “adjusted” by adding in students that transfer into the school and by subtracting students who transfer out of the school (OSPI).
6. Office of Superintendent of Public Instruction 2017
7. Washington State Healthy Youth Survey (HYS)
8. Risk and Protection Profile for Substance Abuse Prevention in Washington Communities (DSHS 2017)
9. Washington Association of Sheriffs & Police Chiefs - Crime in Washington, 2012-2016
10. Maik & Associates – South King County Gang Group Audit (2017)
11. Wyrick 2006